

# Carvins Cove Natural Reserve

## LEGEND



INFORMATION



PARKING



SHELTER



RESTROOM



NO HORSES



NO BIKES



NO HIKERS



APPALACHIAN TRAIL



BOAT LAUNCH



PICNIC AREA



EASY



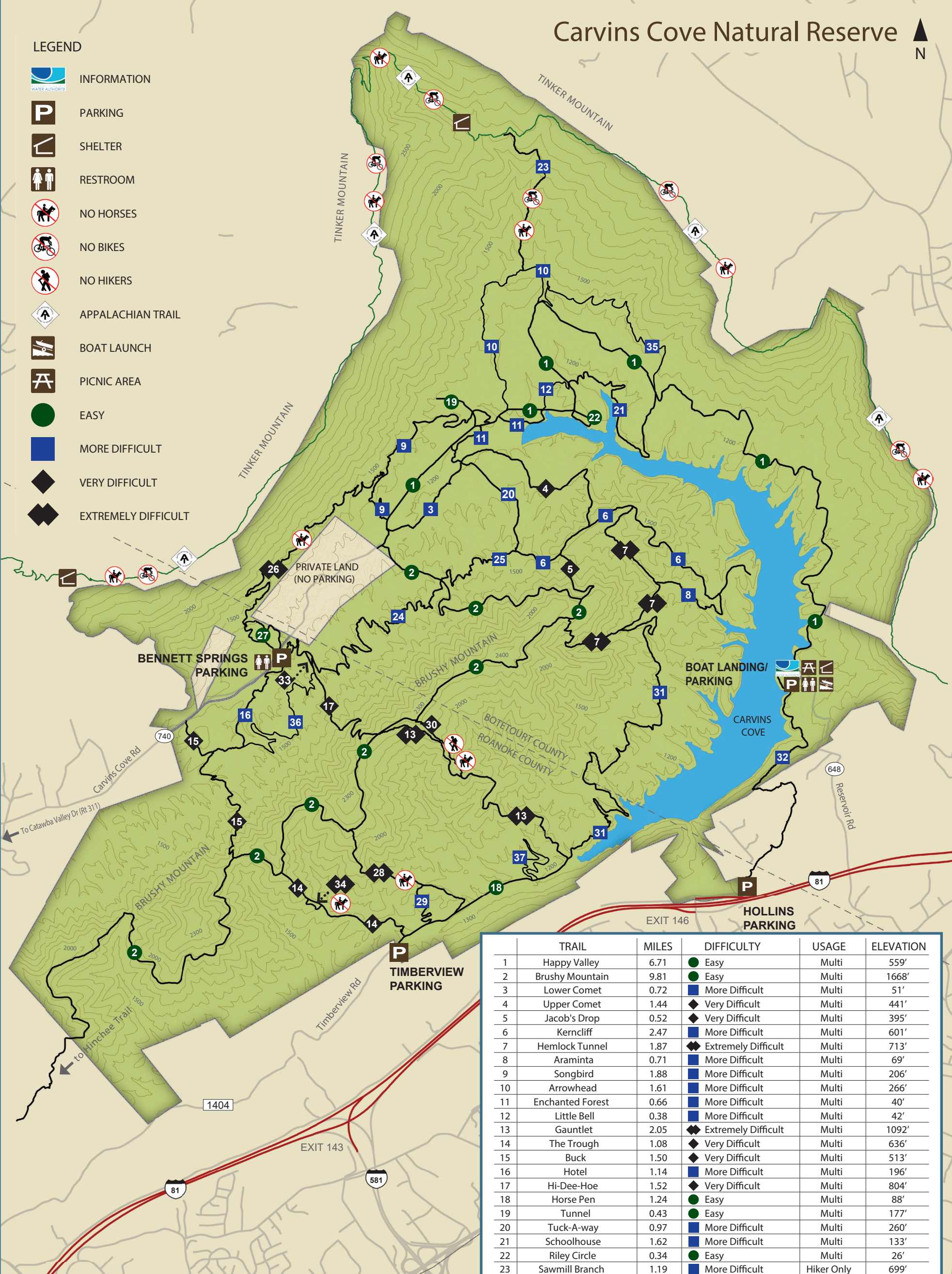
MORE DIFFICULT



VERY DIFFICULT



EXTREMELY DIFFICULT



**Easy:** These routes are appropriate for novice through advanced users. They generally follow obvious, well marked trails and roads. Grades are gentle, and only minor obstacles will be encountered.

**More Difficult:** These routes are appropriate for intermediate through advanced users. Terrain will be steeper, trails narrower, and obstacles such as rocks and loose stone will be encountered.

**Very Difficult:** These routes are recommended for physically fit users with technical skill. Terrain is steep and difficult obstacles will be encountered.

**Extremely Difficult:** These routes are recommended only for physically fit users with technical skill. Users need to control speed, watch for surface hazards, and be familiar with trail location. Terrain is steep, and technical obstacles will be encountered.

	TRAIL	MILES	DIFFICULTY	USAGE	ELEVATION
1	Happy Valley	6.71	● Easy	Multi	559'
2	Brushy Mountain	9.81	● Easy	Multi	1668'
3	Lower Comet	0.72	■ More Difficult	Multi	51'
4	Upper Comet	1.44	◆ Very Difficult	Multi	441'
5	Jacob's Drop	0.52	◆ Very Difficult	Multi	395'
6	Kerncliff	2.47	■ More Difficult	Multi	601'
7	Hemlock Tunnel	1.87	◆ Extremely Difficult	Multi	713'
8	Araminta	0.71	■ More Difficult	Multi	69'
9	Songbird	1.88	■ More Difficult	Multi	206'
10	Arrowhead	1.61	■ More Difficult	Multi	266'
11	Enchanted Forest	0.66	■ More Difficult	Multi	40'
12	Little Bell	0.38	■ More Difficult	Multi	42'
13	Gauntlet	2.05	◆ Extremely Difficult	Multi	1092'
14	The Trough	1.08	◆ Very Difficult	Multi	636'
15	Buck	1.50	◆ Very Difficult	Multi	513'
16	Hotel	1.14	■ More Difficult	Multi	196'
17	Hi-Dee-Hoe	1.52	◆ Very Difficult	Multi	804'
18	Horse Pen	1.24	● Easy	Multi	88'
19	Tunnel	0.43	● Easy	Multi	177'
20	Tuck-A-way	0.97	■ More Difficult	Multi	260'
21	Schoolhouse	1.62	■ More Difficult	Multi	133'
22	Riley Circle	0.34	● Easy	Multi	26'
23	Sawmill Branch	1.19	■ More Difficult	Hiker Only	699'
24	Four Gorge	2.13	■ More Difficult	Multi	275'
25	Four Gorge Extension	0.69	■ More Difficult	Multi	75'
26	Rattlin' Run	2.28	◆ Extremely Difficult	No Horses	364'
27	Bennett Springs Loop	0.83	● Easy	Multi	117'
28	Royalty	0.80	◆ Extremely Difficult	No Horses	666'
29	First Deck	0.92	■ More Difficult	Multi	147'
30	OG	0.55	◆ Very Difficult	Bikes Only	339'
31	Lakeside	3.70	■ More Difficult	Multi	524'
32	Tinker Creek	2.24	◆ Very Difficult	Multi	388'
33	Old Hi-Dee-Hoe	0.13	◆ Very Difficult	Multi	40'
34	Trough Expert	0.12	◆ Extremely Difficult	No Horses	63'
35	Rock'N'Roll	1.83	■ More Difficult	Multi	115'
36	Midway Cruise	1.85	■ More Difficult	Multi	226'
37	Third Deck	1.03	■ More Difficult	Multi	156'

