



# Eureka Park Recreation Center

City of Roanoke



VMDO

COMMUNITY MEETING #2  
JANUARY 24, 2023



DO YOU HAVE QUESTIONS THAT YOU  
WOULD LIKE TO HAVE ANSWERED TODAY?

Write your question(s) on a sticky and place it on  
the question parking lot located near the  
entrance.

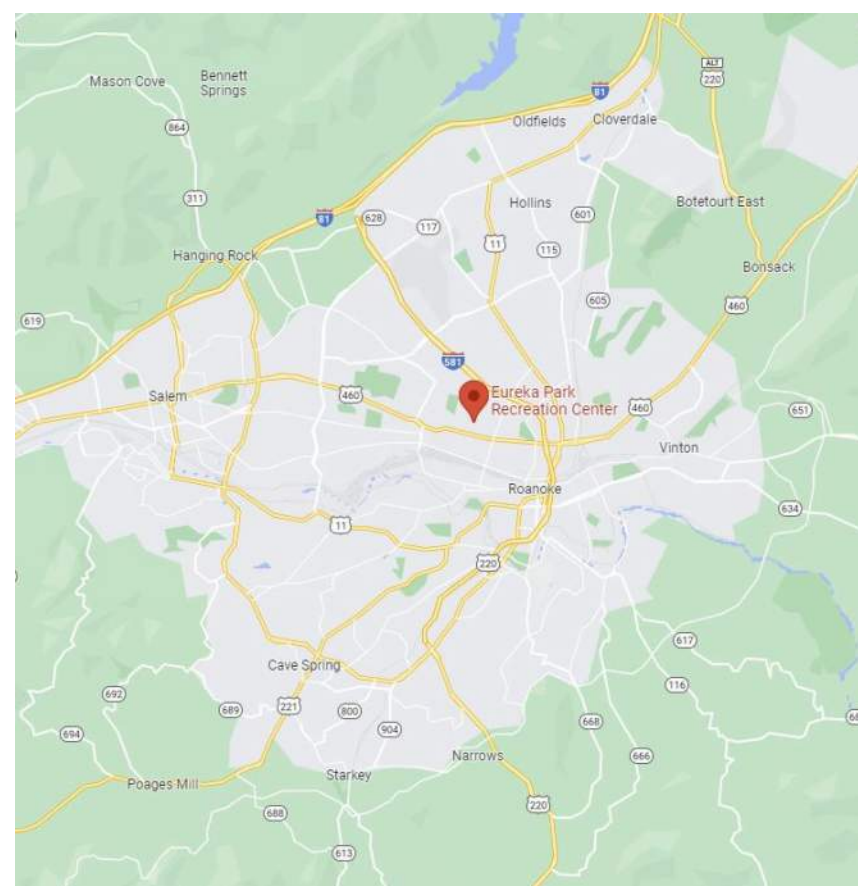
There will be opportunity for group questions and  
comments at the end of the meeting



# Agenda

6:30	Welcome & Project History	<i>Michael Clark</i>
6:35	Eureka is...	<i>Robyn Mitchell</i>
6:40	Project Timeline	<i>Joe Celentano</i>
	Community Meeting 1 Take Aways	
	Building Schemes	
7:00	Break out for individual discussion and review of schemes	
7:40	Q&A, Public Comment	<i>VMDO/ Parks&amp;Rec</i>
7:55	Wrap Up and Look Ahead	<i>Joe Celentano and Michael Clark</i>





**Eureka Park Recreation Center**  
1529 Carroll Ave NW, Roanoke, VA 24017



**VMDO**

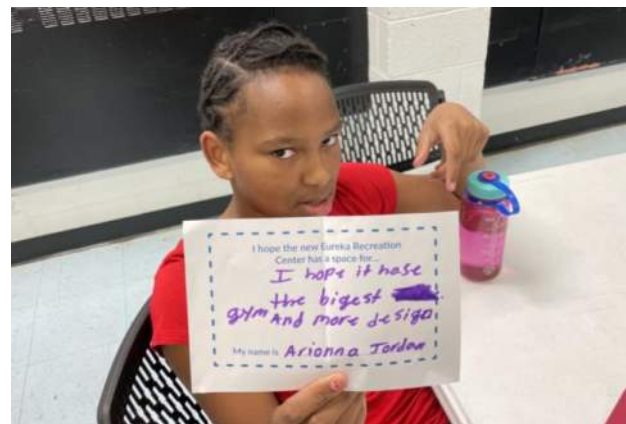
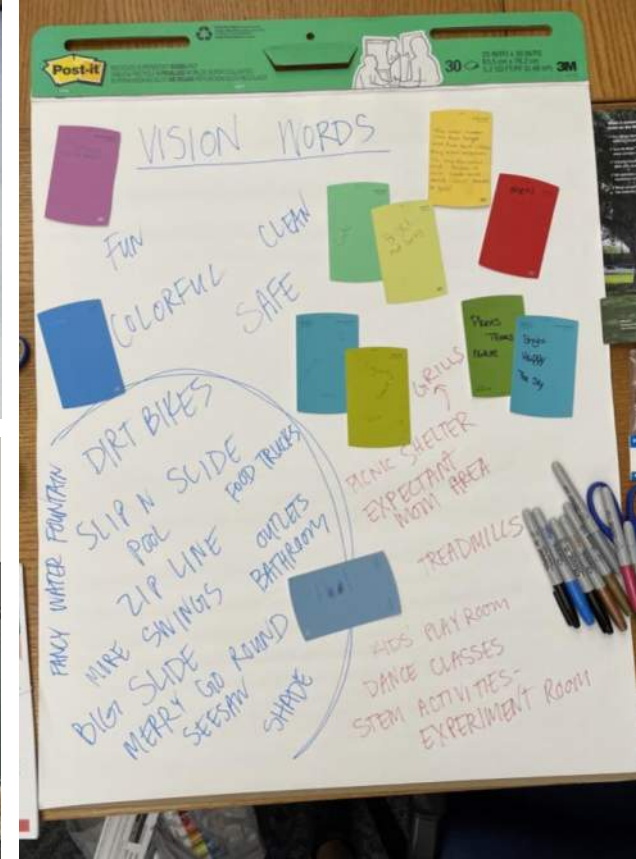


# EUREKA PROJECT HISTORY AND PREVIOUS FEEDBACK

Aug	2017	Eureka Park Recreation Center Feasibility Study
	2019	Parks And Recreation Released 10-year Master Plan
	2019	Facilities Assessment Report
Mar	2021	Reimagine Recreation Virtual Stakeholder Meetings
Apr	2021	Reimagine Recreation Virtual Input Meeting
Jul	2021	Reimagine Recreation Surveys Released Online And Mailed
Oct	2021	Youth Engagement - Eureka After School Program
Nov	2021	Outreach At Eureka Fall Fest
Jun	2022	Outreach At Ricky Renell Wright Basketball Court Dedication Ceremony
Dec	2022	First Community Engagement Meeting For Redevelopment Of Eureka Recreation Center
Jan	2023	Youth Engagement - Lucy Addison After School Club Youth Engagement - Eureka After School Program Youth Engagement - Community Arts-reach Youth Fellowship

ACCESS PREVIOUS STUDIES AND RESOURCES  
<https://www.playroanoke.com/reimaginerec/>





YOUTH ENGAGEMENT SINCE LAST MEETING

VMDO



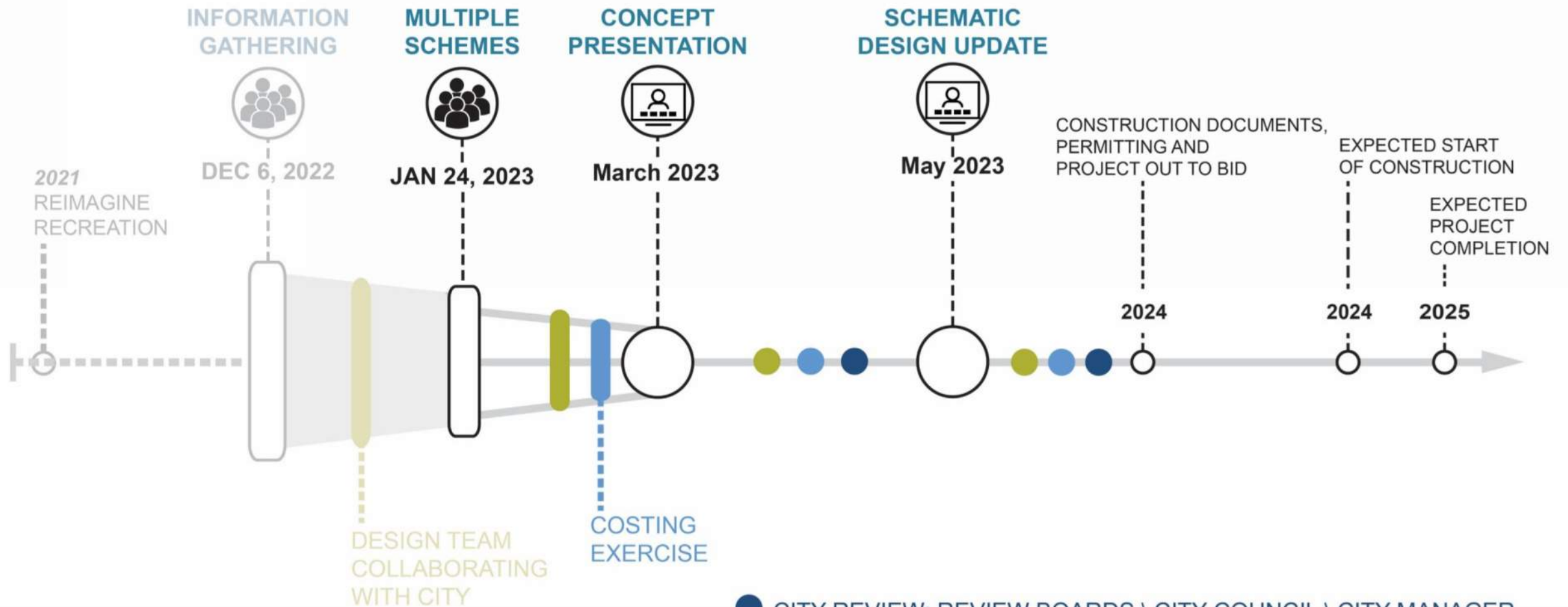


# MEET THE ARTIST IN RESIDENCE!

- ROANOKE NATIVE
- GREW UP IN NW
- PARKS AND REC KID
- COMMUNITY ADVOCATE
- DIGITAL/BRAND ARTIST

**ROBYN WILL SERVE AS A PARKS AND REC  
ARTIST IN RESIDENCE, CONNECTING  
NEIGHBORS TO THE DEVELOPMENT OF THE  
NEW EUREKA PARK COMMUNITY CENTER.**

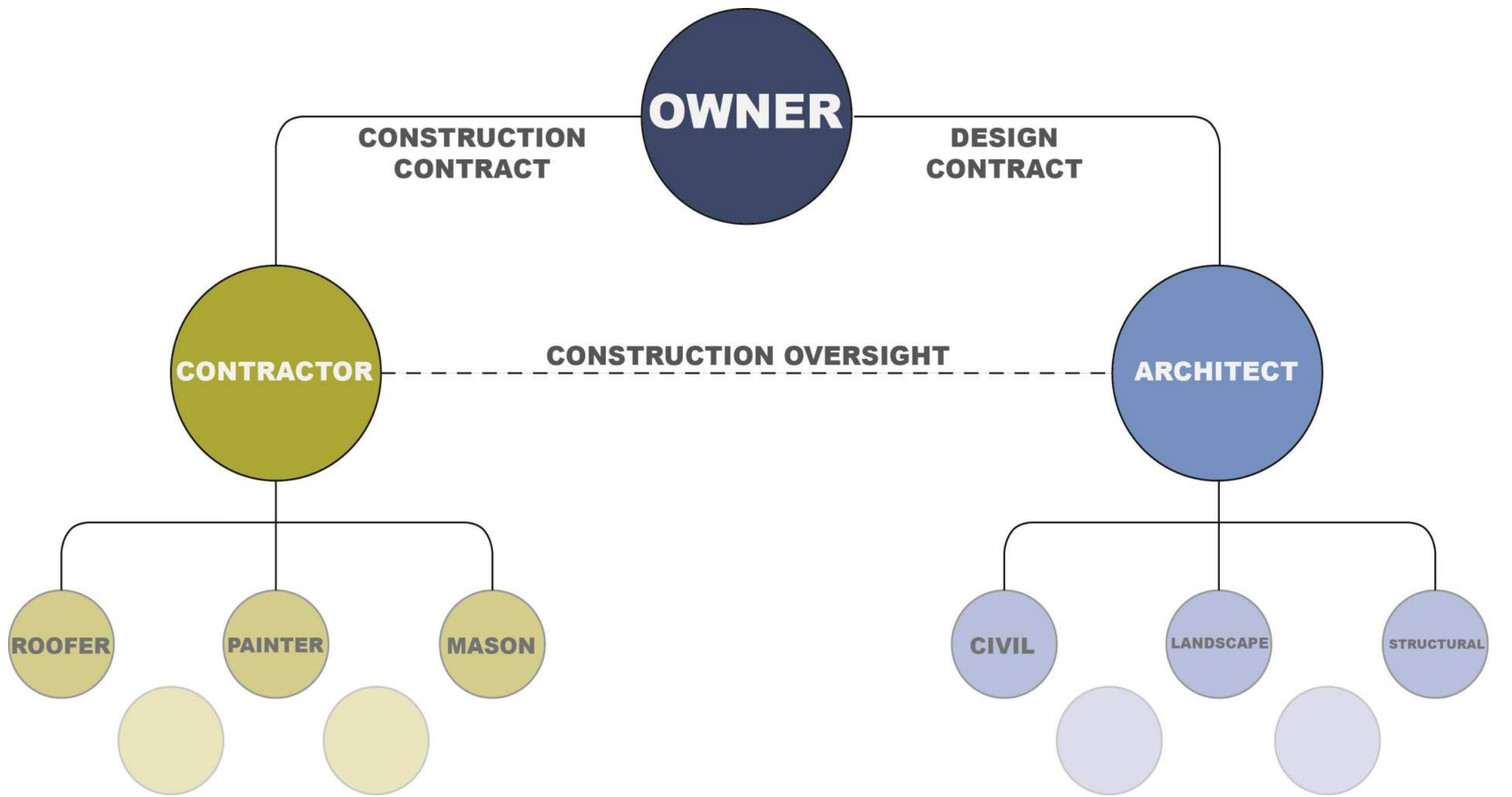




MEETING MATERIALS, SURVEYS, PROJECT UPDATES WILL BE POSTED ONLINE AFTER THE PUBLIC MEETINGS AND PERIODICALLY DURING DESIGN AND CONSTRUCTION

<https://www.playroanoke.com/eureka-redevelopment/>







CM

COMMUNITY  
ENGAGEMENT

2-3 MONTHS

STAKEHOLDERS ARE ENGAGED TO GIVE FEEDBACK AND HELP SHAPE PROJECT GOALS, MULTIPLE BUILDING SCHEMES ARE TESTED AND A PRELIMINARY COST IS SET



SD

SCHEMATIC  
DESIGN

2 MONTHS

DEVELOPING A SINGLE BUILDING SCHEME AND FINALIZING BUILDING SPACES AND SIZES.



DD

DESIGN  
DEVELOPMENT

3 MONTHS

- BUILDING EXTERIOR MORE FULLY DESIGNED
- INTERIOR LAYOUT COMPLETED
- DIMENSIONS OF ALL SPACES FINALIZED
- MATERIALS SELECTED



CD

CONSTRUCTION  
DOCUMENTS

5 MONTHS

PRECISE DOCUMENTATION AND COORDINATION OF ALL DETAILS AND SYSTEMS, INCLUDING STRUCTURAL, MECHANICAL, CIVIL AND ARCHITECTURAL



BP

BUILDING  
PERMIT

2 MONTHS

REVIEW BY CITY AND CODE OFFICIALS TO ENSURE BUILDING MEETS BUILDING, LAND USE AND ENERGY CODES.



BN

BIDDING &  
NEGOTIATION

3-4 MONTHS

CONSTRUCTION DRAWINGS AND SPECIFICATIONS ARE PUBLICALLY ISSUED TO CONTRACTORS TO OFFER BIDS ON. THE CONTRACTOR IS CHOSEN BASED ON A VARIETY OF FACTORS AND A CONTRACT IS NEGOTIATED.



CA

CONSTRUCTION

15-18 MONTHS

CONSTRUCTION FINALLY BEGINS!



THE PHASES OF DESIGNING & BUILDING A PROJECT

VMDO





COMMUNITY MEETING 1 – DECEMBER 6, 2022





The following take aways are based on the in-person community meeting with over 30 participants and the online survey with 72 responses

Full log of comments and responses will be posted on the project website





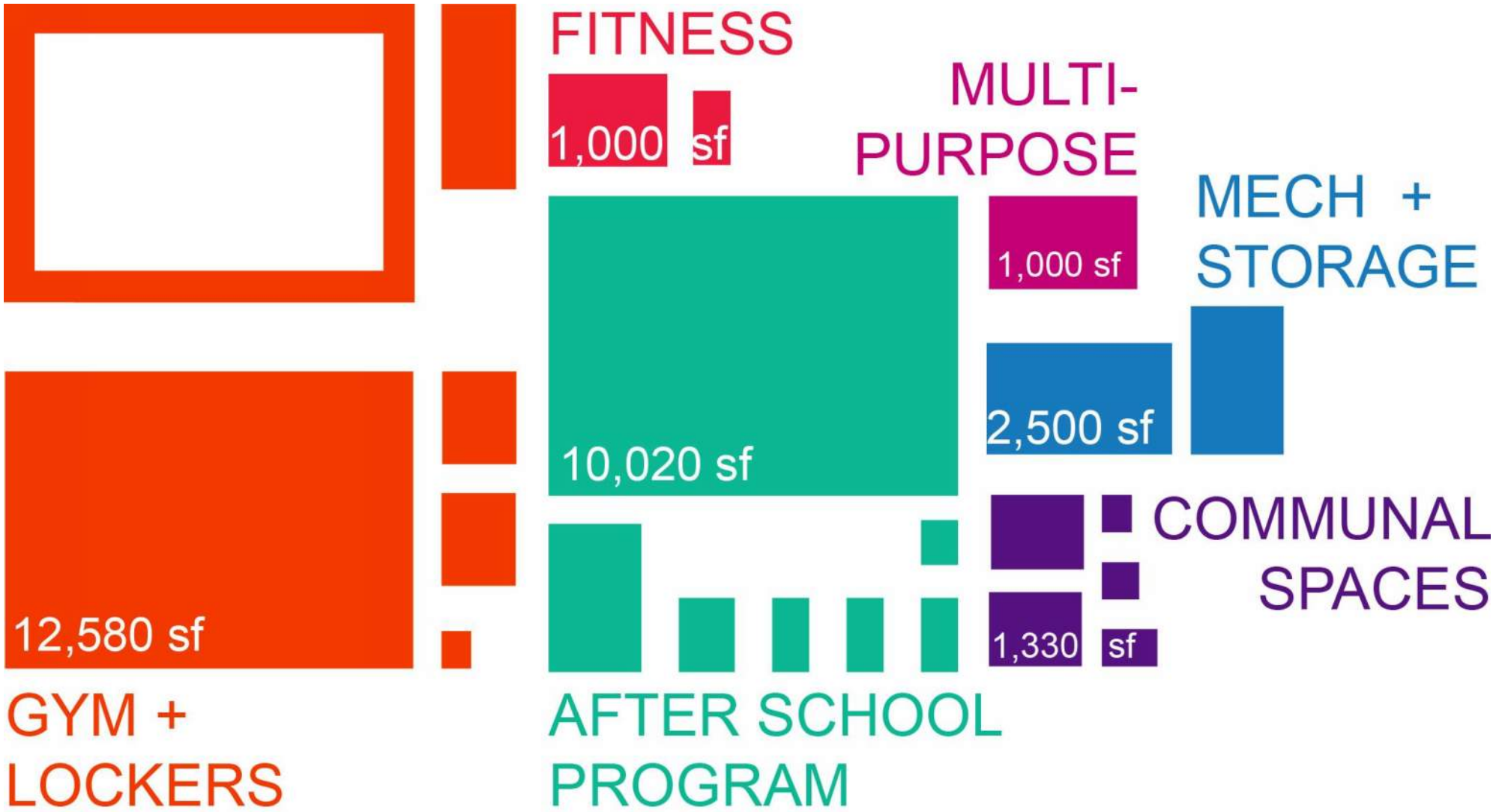
SITE ACTIVITY

VMDO



- Create a **welcoming and safe** space for the local community, particularly youth and seniors
- Incorporate **color and community history** into the building and site
- Spaces need to be **flexible** both in use and size and able to host a diverse range of adult and youth programs
- Elements in balance – keep a **good mix of things**. Green space and play area, paths, natural flora. **Protect the beautiful existing trees and green spaces.**
- Focus on spaces for people to be **active and healthy**, both interior and exterior
- **Hand ball (!), basketball, multi sports courts**
- Use **natural lighting** as much as possible, while avoiding glare on sports courts





GYM + LOCKERS
Main Court
Gym Storage
Walking Track
Locker Rooms
Family Locker
FITNESS
Fitness Area
Fitness Storage
MULTI-PURPOSE
Multi-Purpose
AFTER SCHOOL PROGRAM
Flexible Classroom
Secondary Gym
Kitchen
Private Office
Shared office
Small Conference Room
Storage
COMMUNAL SPACES
Vestibule
Community / Lobby
Teen Zone
Support Office
Park Toilet
MECH + STORAGE
Building Storage / Janitors
Mechanical/Elec/Fire Pump

\*TARGET PROGRAM TO BE CONFIRMED THROUGH COSTING EXERCISE

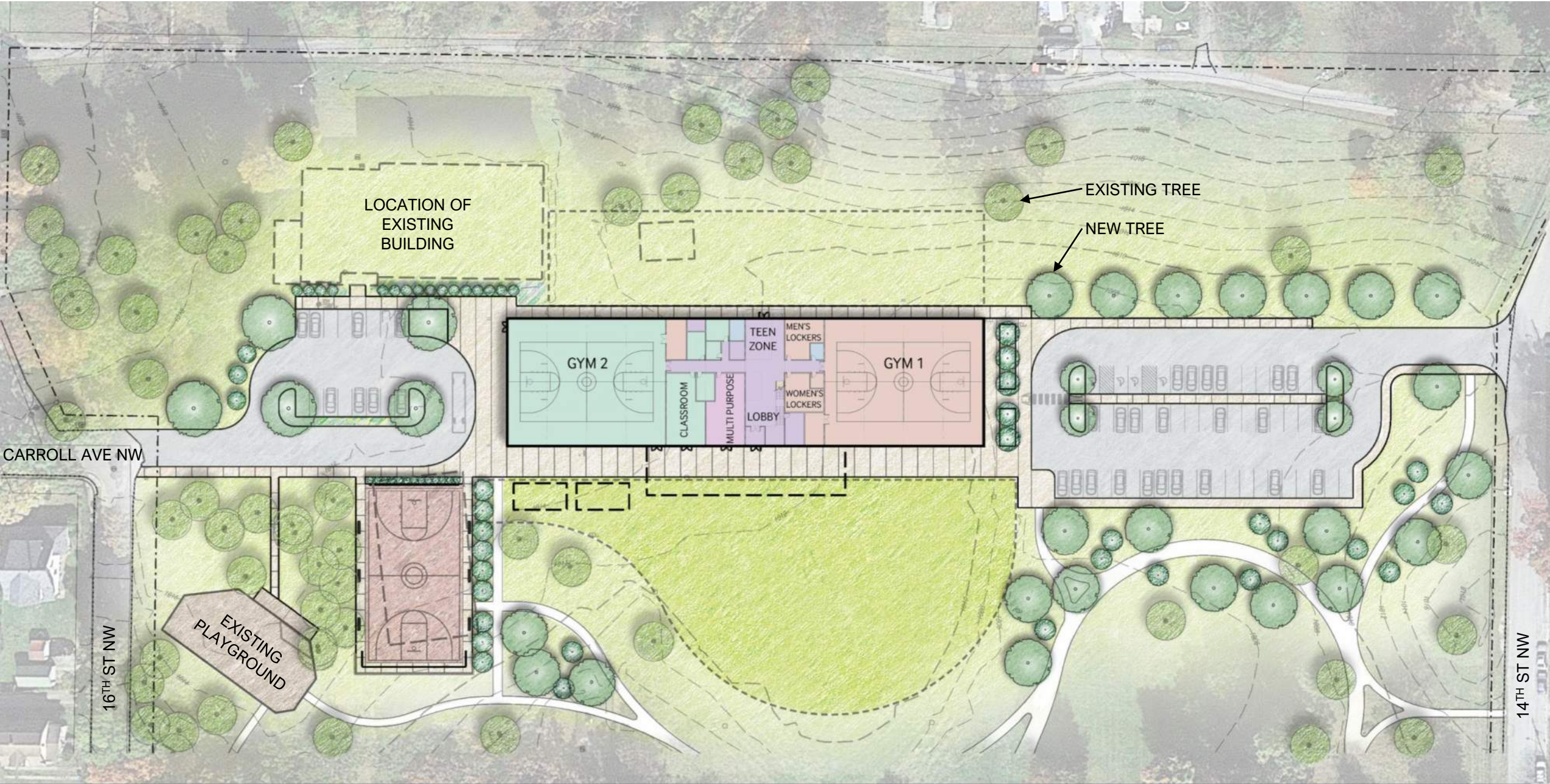


# Gather community input on issues and benefits of the three schemes

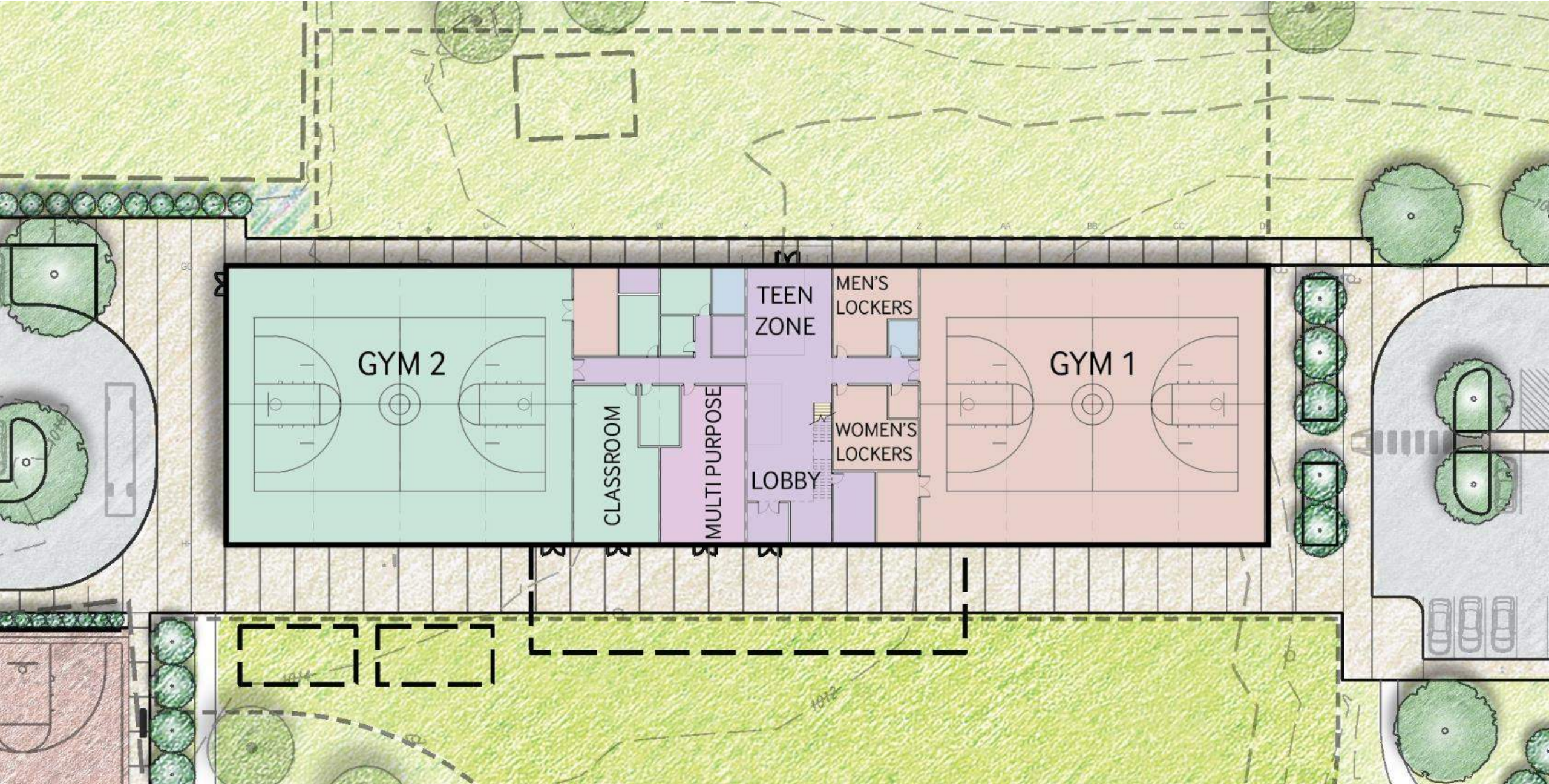
## TONIGHT'S PROCESS:

- 1) Overview of schemes will be presented
- 2) Break out and rotate through the three stations along walls in cafeteria. Each station explores a different scheme. Facilitators will answer questions and gather input. Comments can also be written on post-its or on your handout.
- 3) At the end of the evening, a full group question and comment session to draw conclusions about site strategizes and schemes and build consensus on path forward.

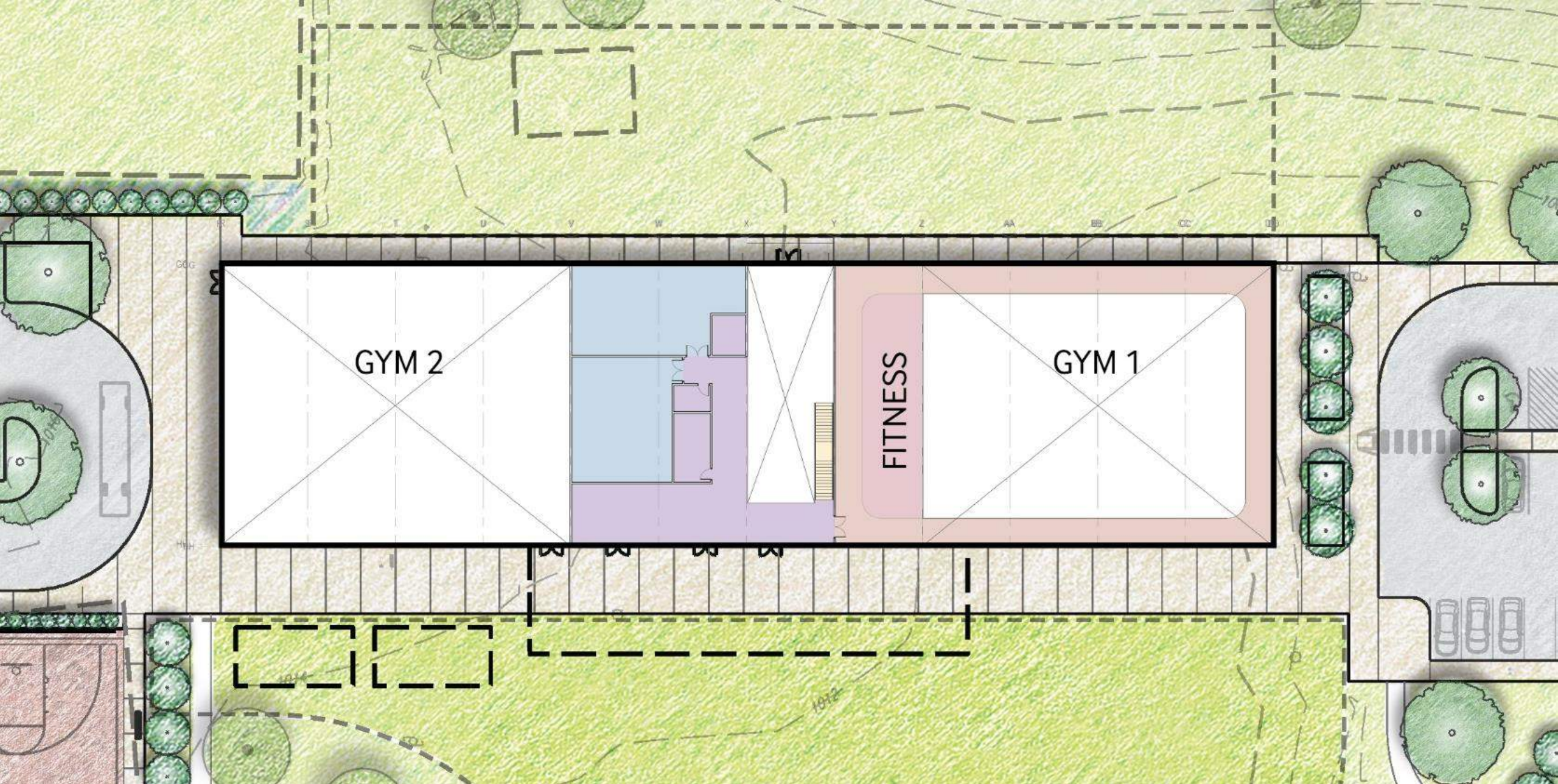
















BAR SCHEME

VMDO

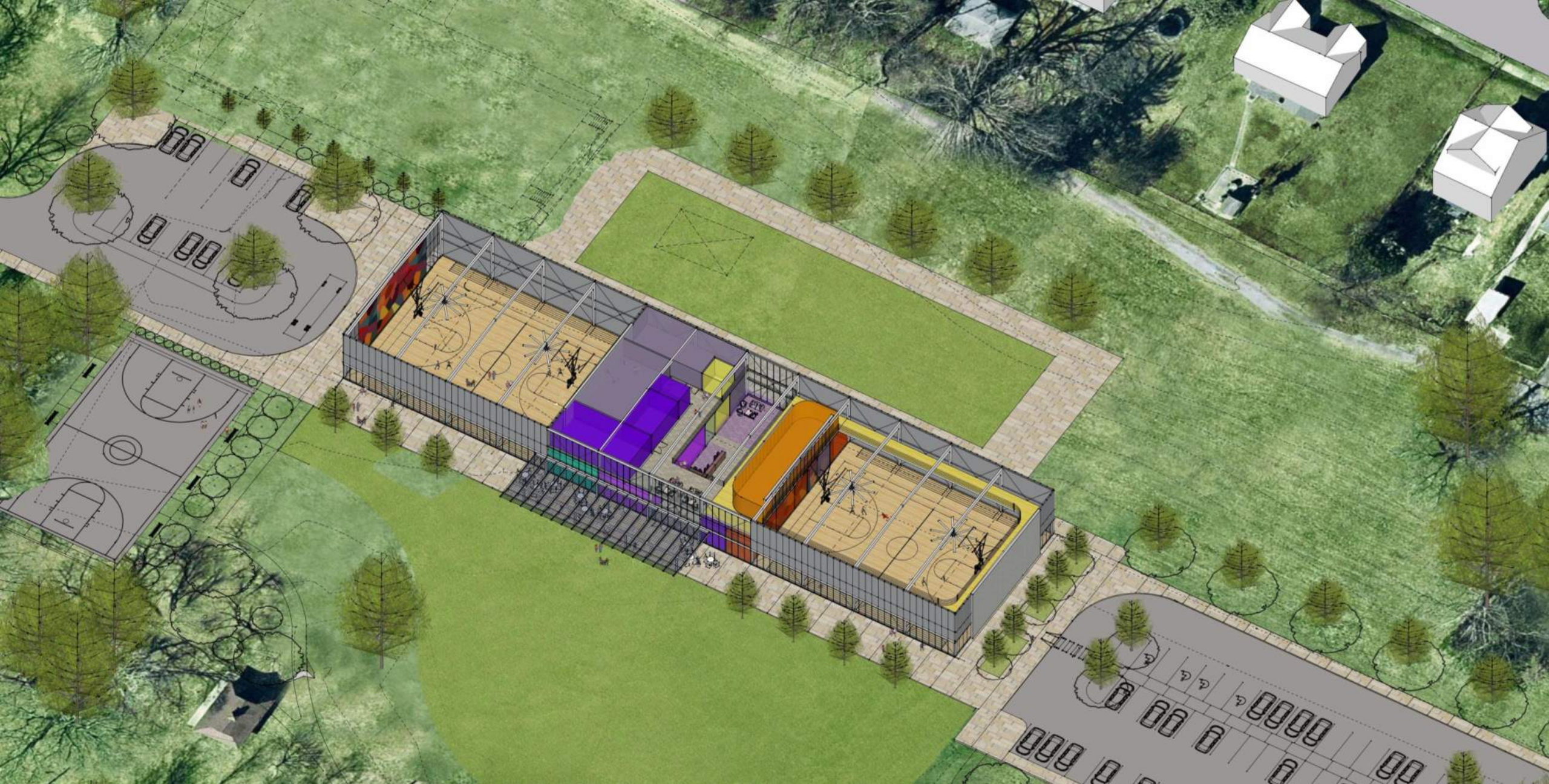




BAR SCHEME

VMDO





BAR SCHEME

VMDO









BAR SCHEME

VMDO





BAR SCHEME

VMDO





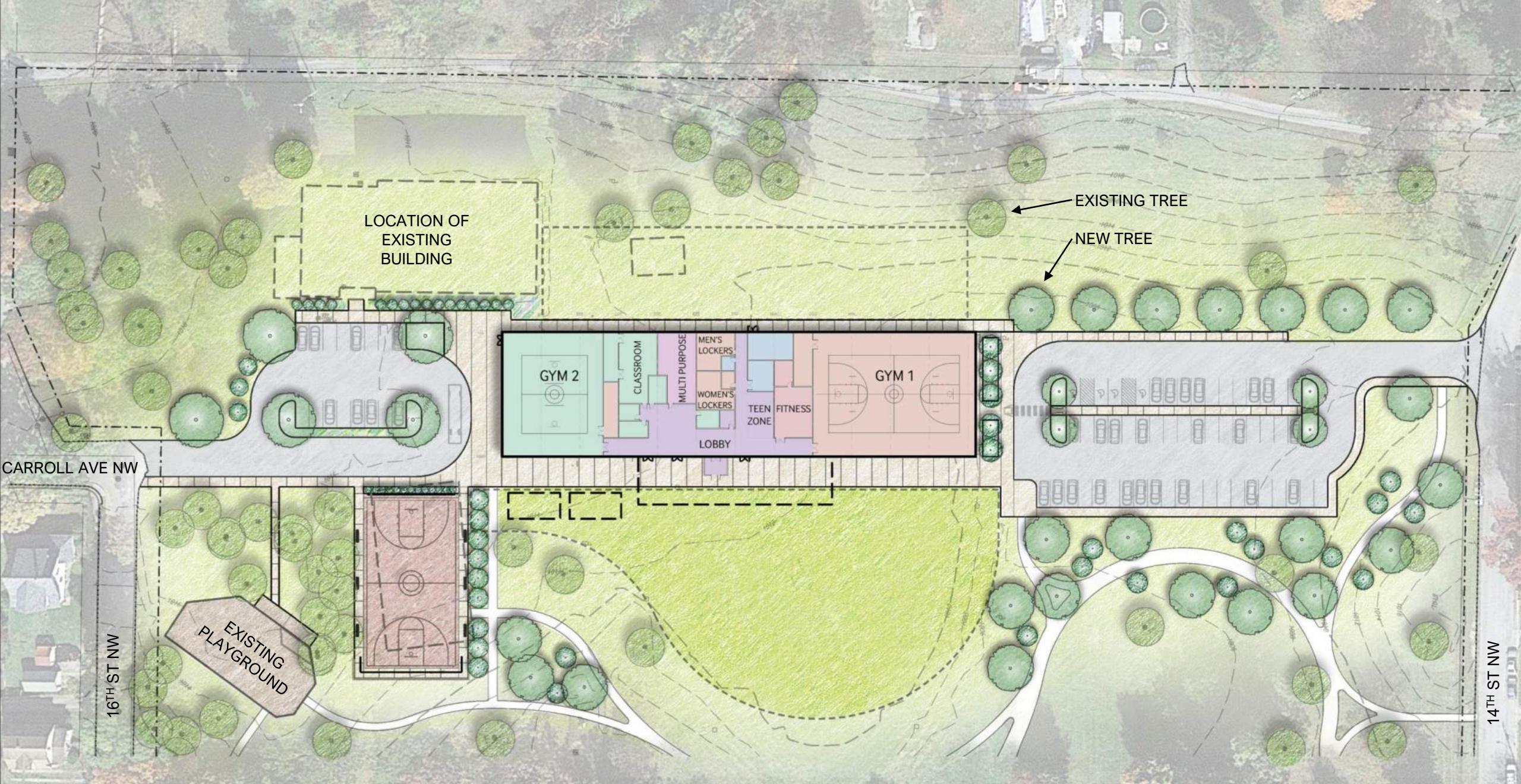
BAR SCHEME

VMDO



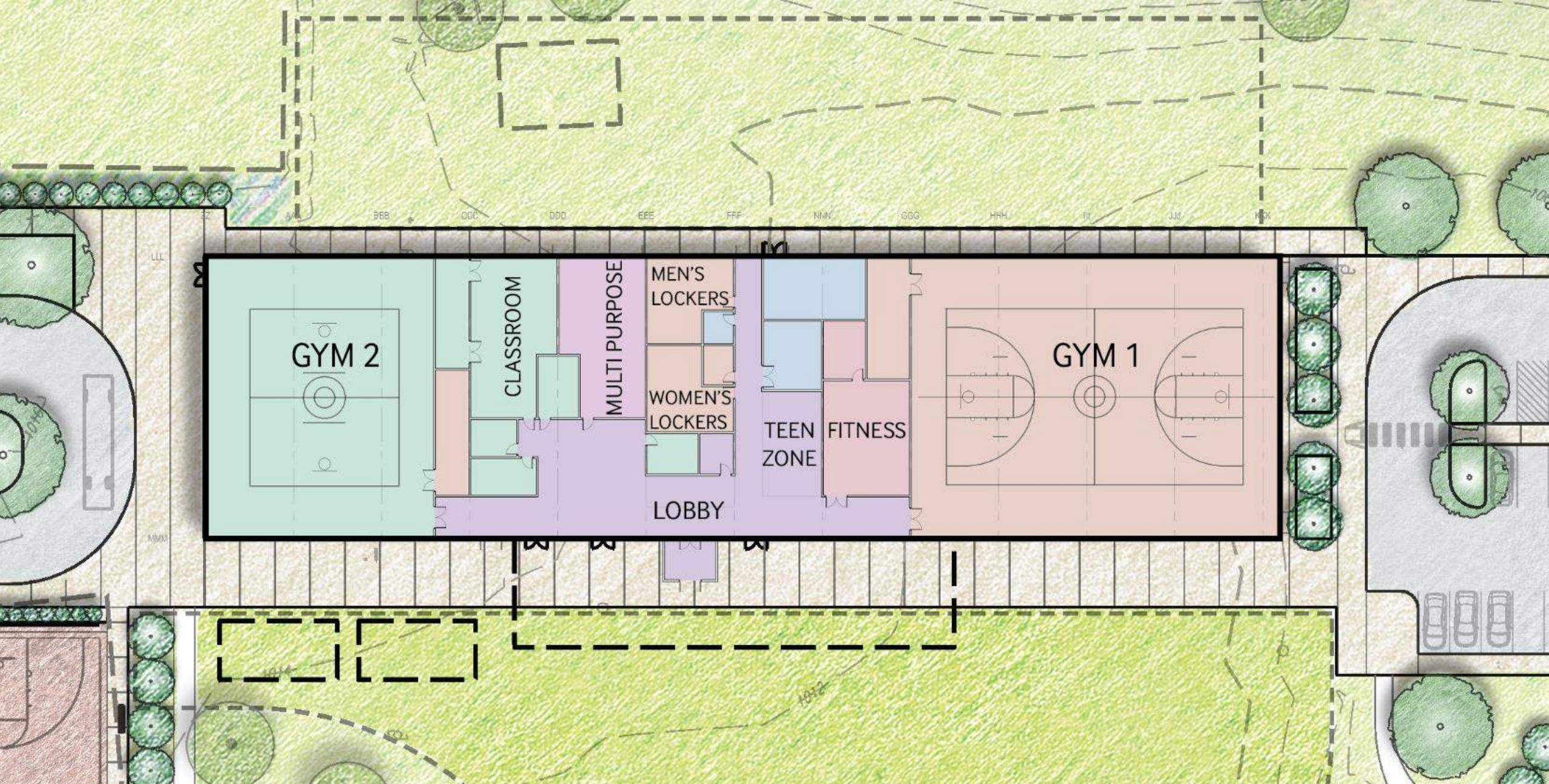






BAR SCHEME – ONE LEVEL





BAR SCHEME – ONE LEVEL





BAR SCHEME – ONE LEVEL





BAR SCHEME – ONE LEVEL





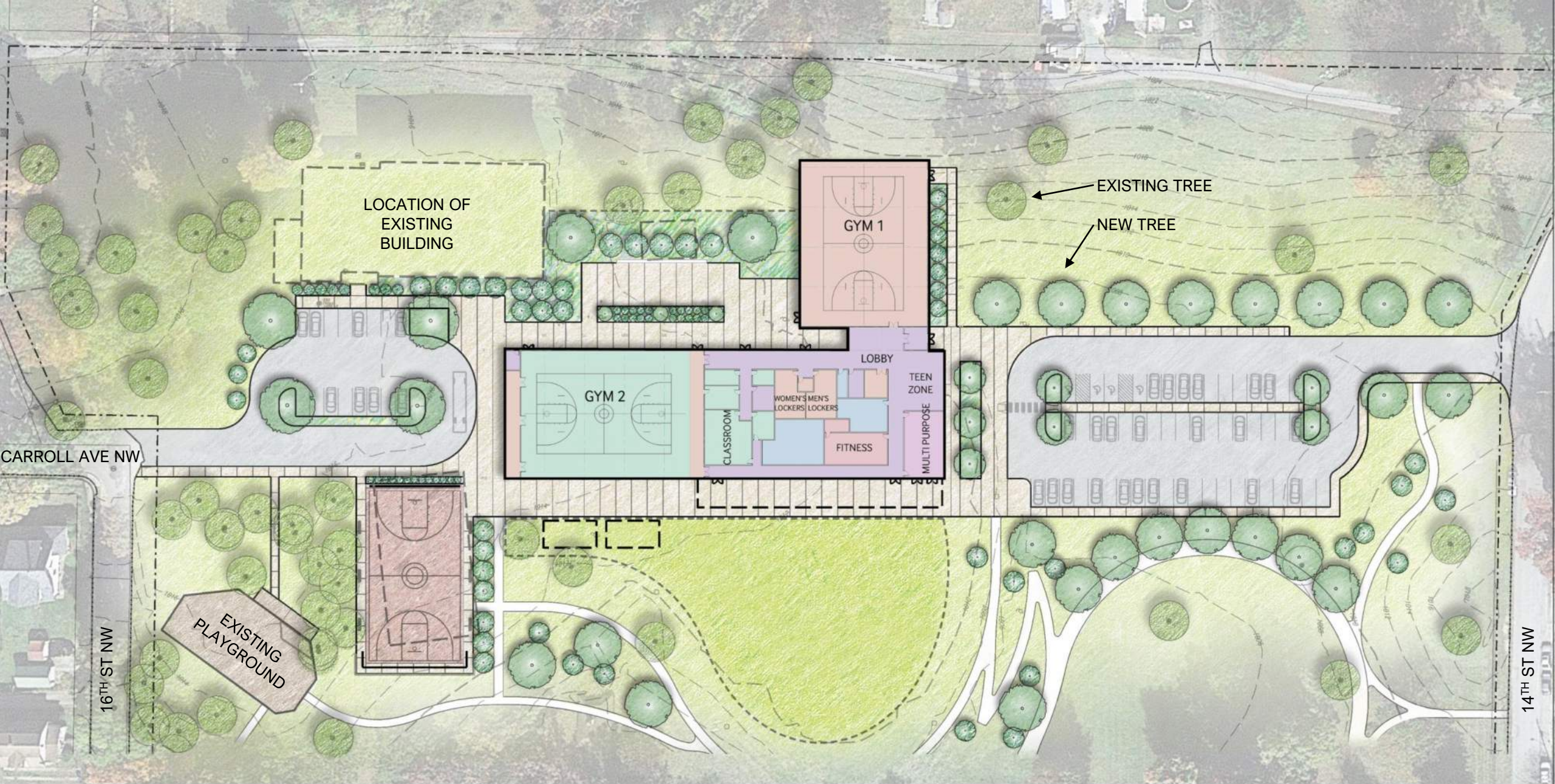
BAR SCHEME – ONE LEVEL





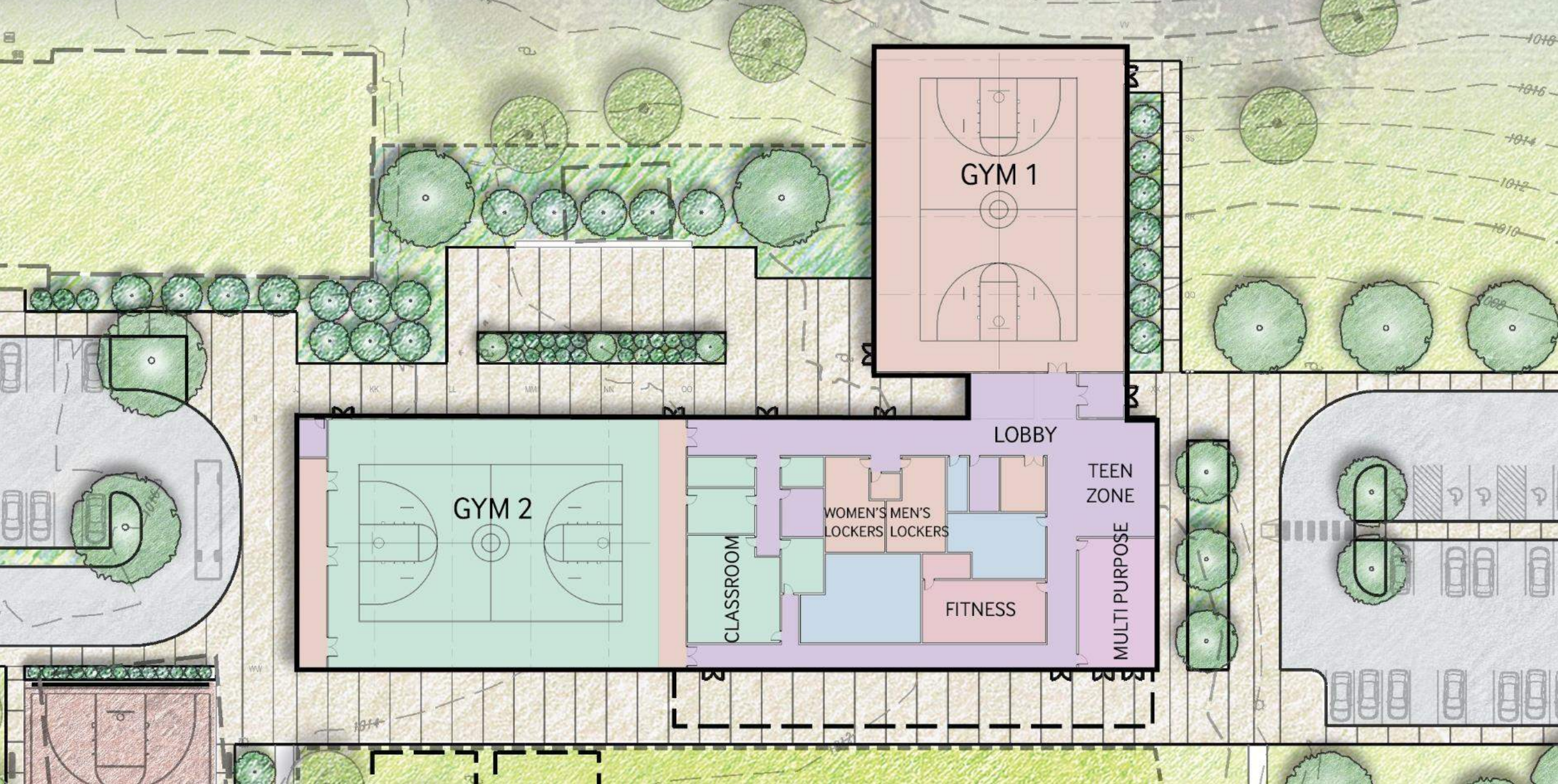
BAR SCHEME – ONE LEVEL





COURTYARD SCHEME





COURTYARD SCHEME





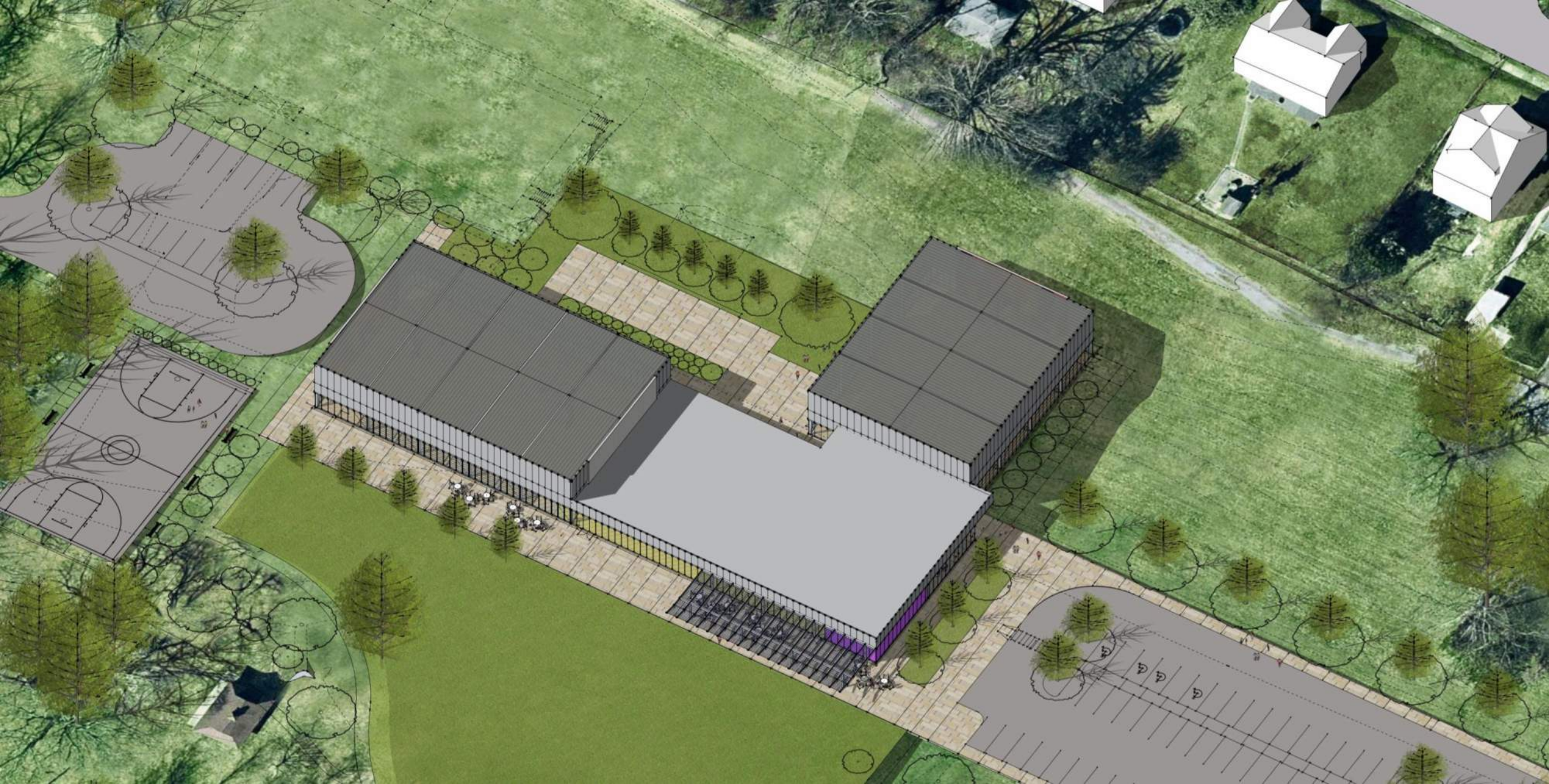
COURTYARD SCHEME





COURTYARD SCHEME





COURTYARD SCHEME





COURTYARD SCHEME





COURTYARD SCHEME

VMDO





COURTYARD SCHEME

VMDO





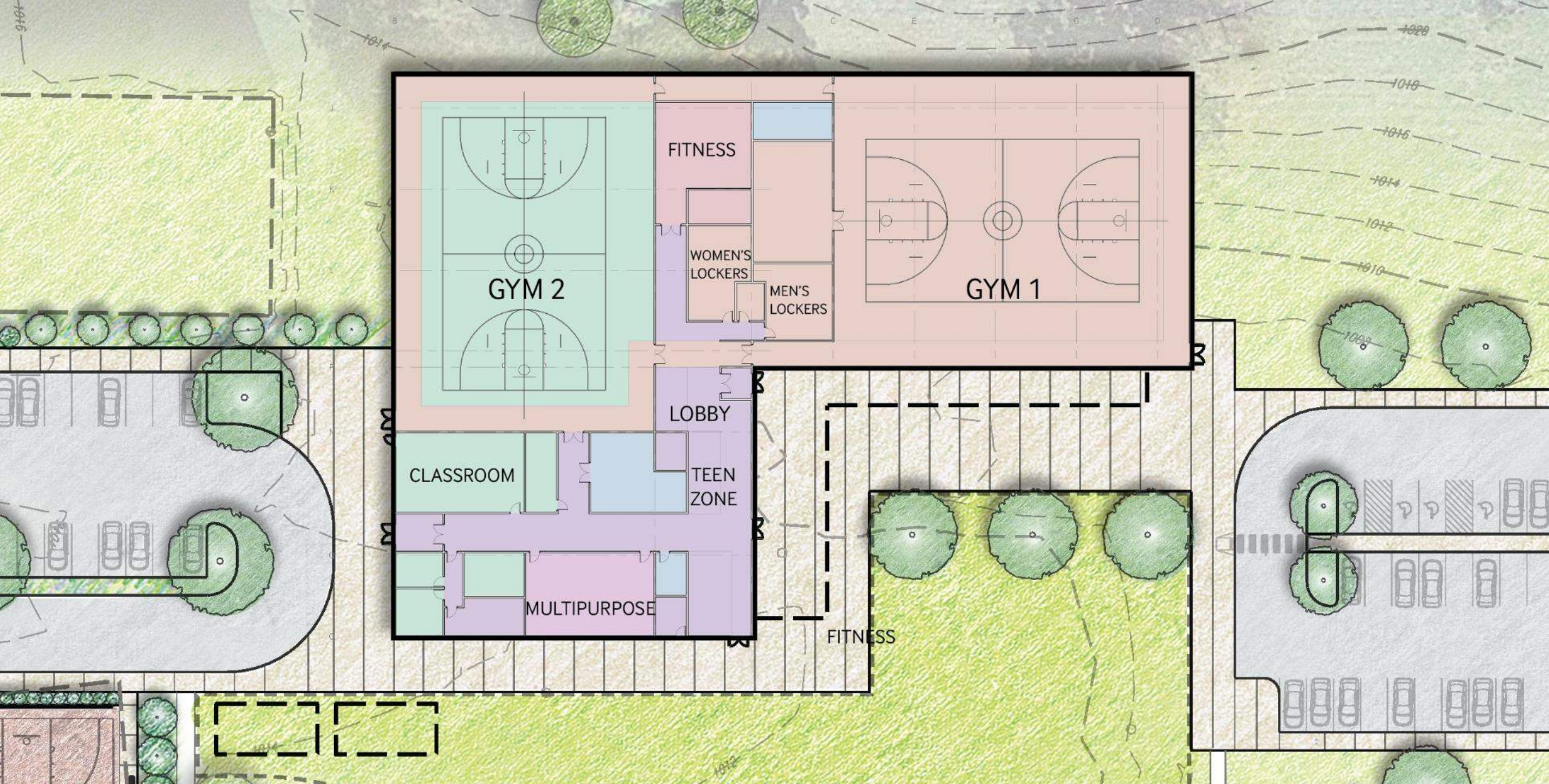
COURTYARD SCHEME





LAWN SCHEME





LAWN SCHEME





LAWN SCHEME

VMDO

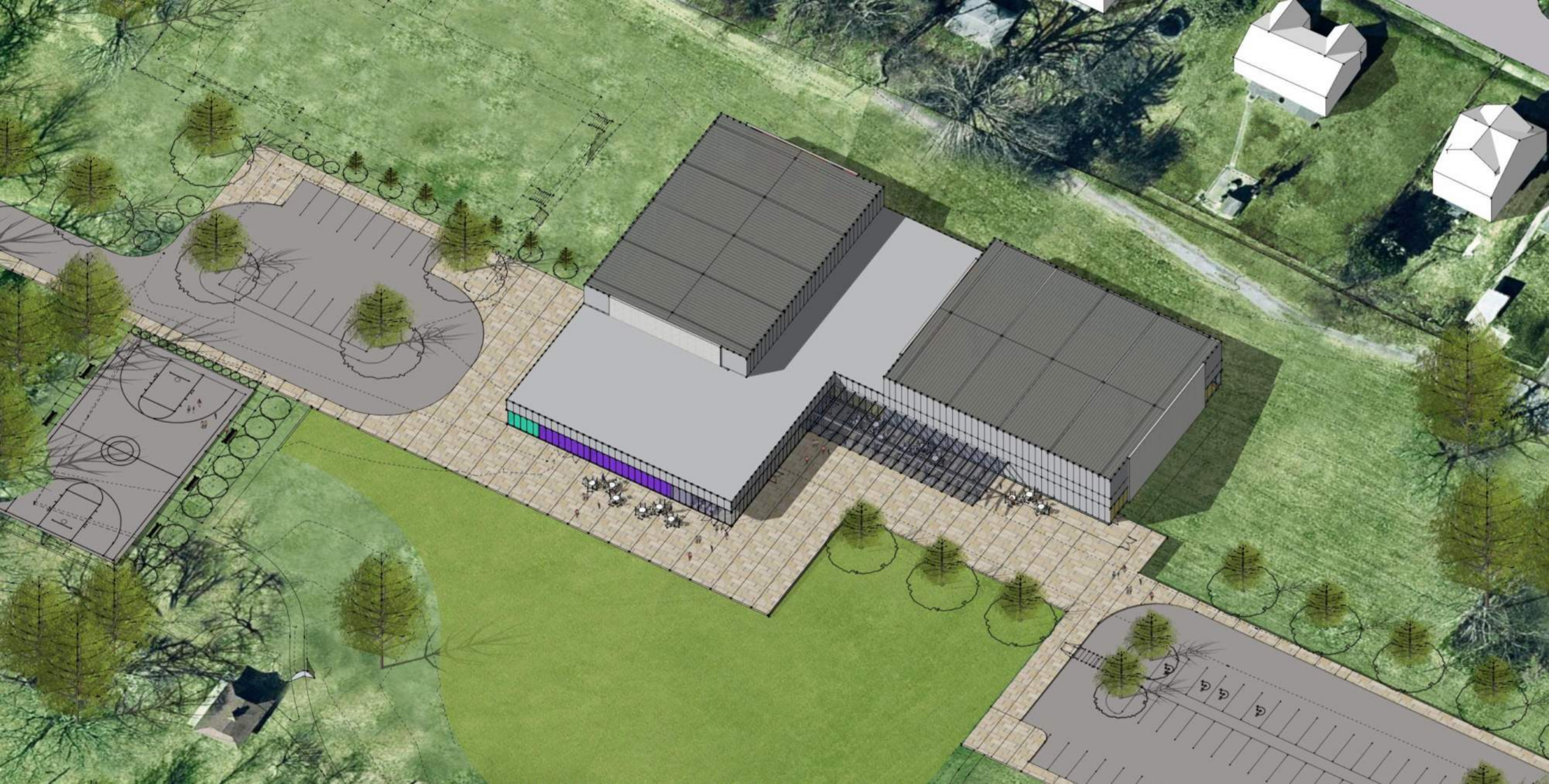




LAWN SCHEME

VMDO





LAWN SCHEME

VMDO





LAWN SCHEME

VMDO





LAWN SCHEME





LAWN SCHEME

VMDO





LAWN SCHEME

VMDO



# Agenda

6:30	Welcome & Project History	<i>Michael Clark</i>
6:35	Eureka is...	<i>Robyn Mitchell</i>
6:40	Project Timeline	<i>Joe Celentano</i>
	Community Meeting 1 Take Aways	
	Building Schemes	
7:00	Break out for individual discussion and review of schemes	
7:40	Q&A, Public Comment	<i>VMDO/ Parks&amp;Rec</i>
7:55	Wrap Up and Look Ahead	<i>Joe Celentano and Michael Clark</i>



# Next Steps:

- Site and Tree surveys
- VMDO Team to develop and price a single scheme that will be presented virtually at the Community Meeting #3 in **March 2023**
- Check project website for presentation materials and other opportunities to provide input

<https://www.playroanoke.com/eureka-redevelopment/>

# Thank you for coming!