

# ELMWOOD PARK



Event Promoter Guide



# ABOUT ELMWOOD PARK

Located in the heart of downtown Roanoke, Elmwood Park boasts an art walk, decorative fountains, a magnolia tree walkway, and an outdoor amphitheater. Comfortably accommodating 4,000 guests, the Elmwood Park amphitheater features cascading grass seating terraces.

Elmwood Park is a destination for year-round entertainment. From December through February, Roanoke Parks and Recreation partners with Downtown Roanoke Inc. to offer a public ice skating rink in the park. During warmer months, Elmwood transforms from a winter wonderland into a destination for free outdoor yoga classes, concert series, theatrical acts, cultural festivals, community events, and more. Based on an initiative led by Roanoke's City Council, Elmwood Park continues to maintain reduced reservation fees for events, making it ideal for both smaller, community events and large-scale concerts.



# RENTAL INFORMATION

---

## LOCATION

706 Jefferson Street  
Roanoke, Virginia 24011  
United States

---

## CONTACT

Roanoke Parks and Recreation  
[playroanoke@roanokeva.gov](mailto:playroanoke@roanokeva.gov)  
(540) 853-2236

---

## PARKING

There are approximately 3,800 parking spots within a five-minute walk from Elmwood Park and the Amphitheater.

---

## ADA ACCESIBILITY

The main entrance to the amphitheater is ADA and wheelchair accessible. Special accommodations can be made for guests with special needs. Handicapped restrooms are available.

## EQUIPMENT AVAILABLE

Bicycle Barricades (fee)  
Waste Containment  
Trash Bags  
Ice by the Bag (fee)  
Tables 8' and 6' (fee)  
Folding Chairs (fee)  
Event Staff Member  
Battery Back-Up System  
Fire Extinguishers



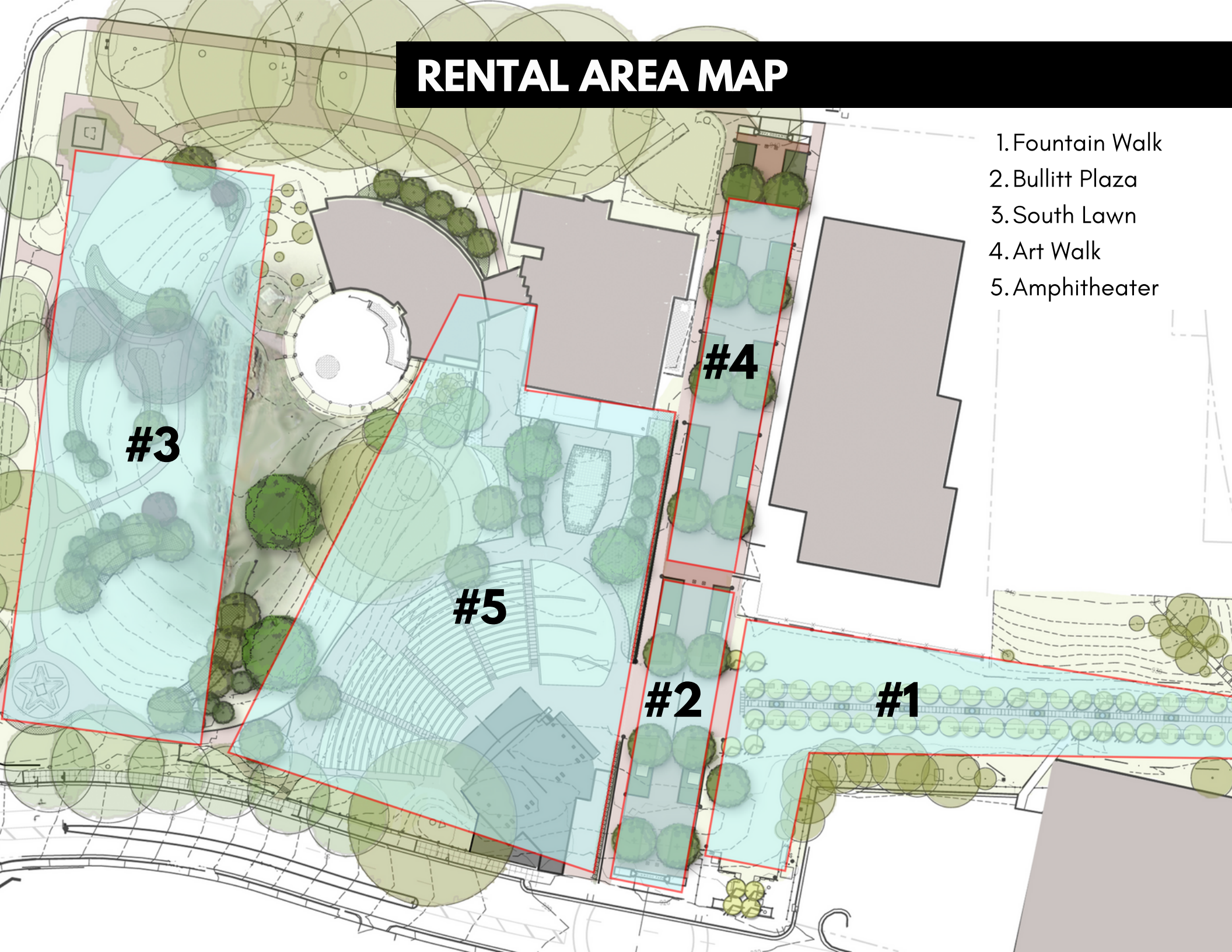
# MAPS





# RENTAL AREA MAP

1. Fountain Walk
2. Bullitt Plaza
3. South Lawn
4. Art Walk
5. Amphitheater





# DESIGNATED VENDOR LOCATION MAP

The map illustrates the layout of a festival site with various zones and vendor placement areas. The legend indicates that red squares with an 'X' represent food tents, red rectangles represent food trucks, and yellow squares with an 'X' represent standard tents without floors. The scale is 1:60, and the map includes a north arrow pointing towards the top right.

Key features and zones include:

- Zone 1:** A circular area with a red tent and a food truck.
- Zone 2:** A large open area with several yellow standard tents.
- Zone 3:** A large open area with several yellow standard tents.
- Zone 4:** A large open area with several yellow standard tents.
- Zone 5:** A large open area with several yellow standard tents.
- Zone 6:** A large open area with several yellow standard tents.
- Zone 7:** A large open area with several yellow standard tents.
- Zone 8:** A large open area with several yellow standard tents.
- Zone 9:** A large open area with several yellow standard tents.
- Zone 10:** A large open area with several yellow standard tents.
- Zone 11:** A large open area with several yellow standard tents.
- Zone 12:** A large open area with several yellow standard tents.

The map also shows various buildings, trees, and other site features. The legend is located in the top right corner, and the scale bar is below it. The north arrow is located in the bottom right corner.

 FOOD TRUCK

SCALE: 1:60

SCALE IN FEET

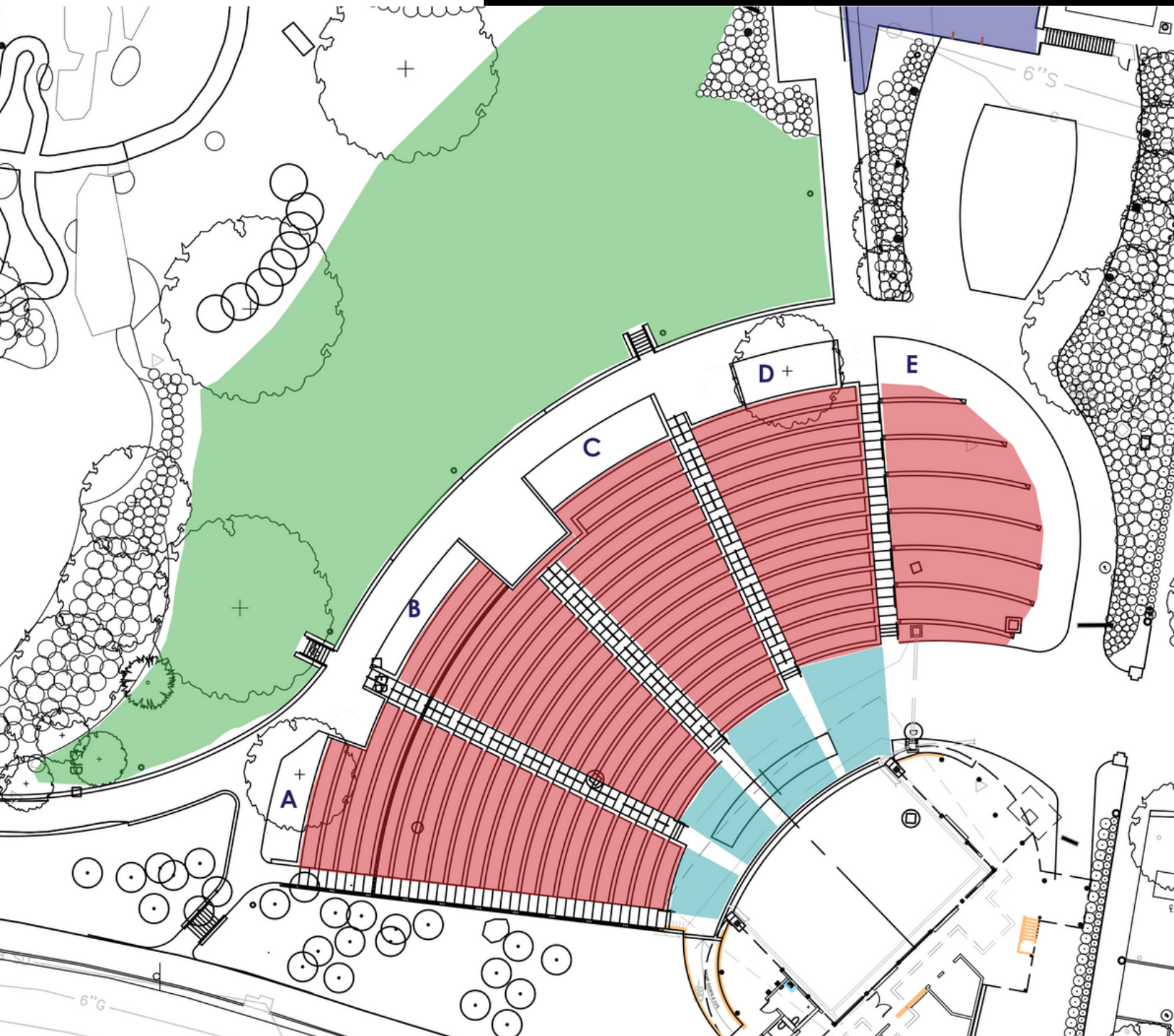


# DESIGNATED PORTABLE RESTROOM MAP





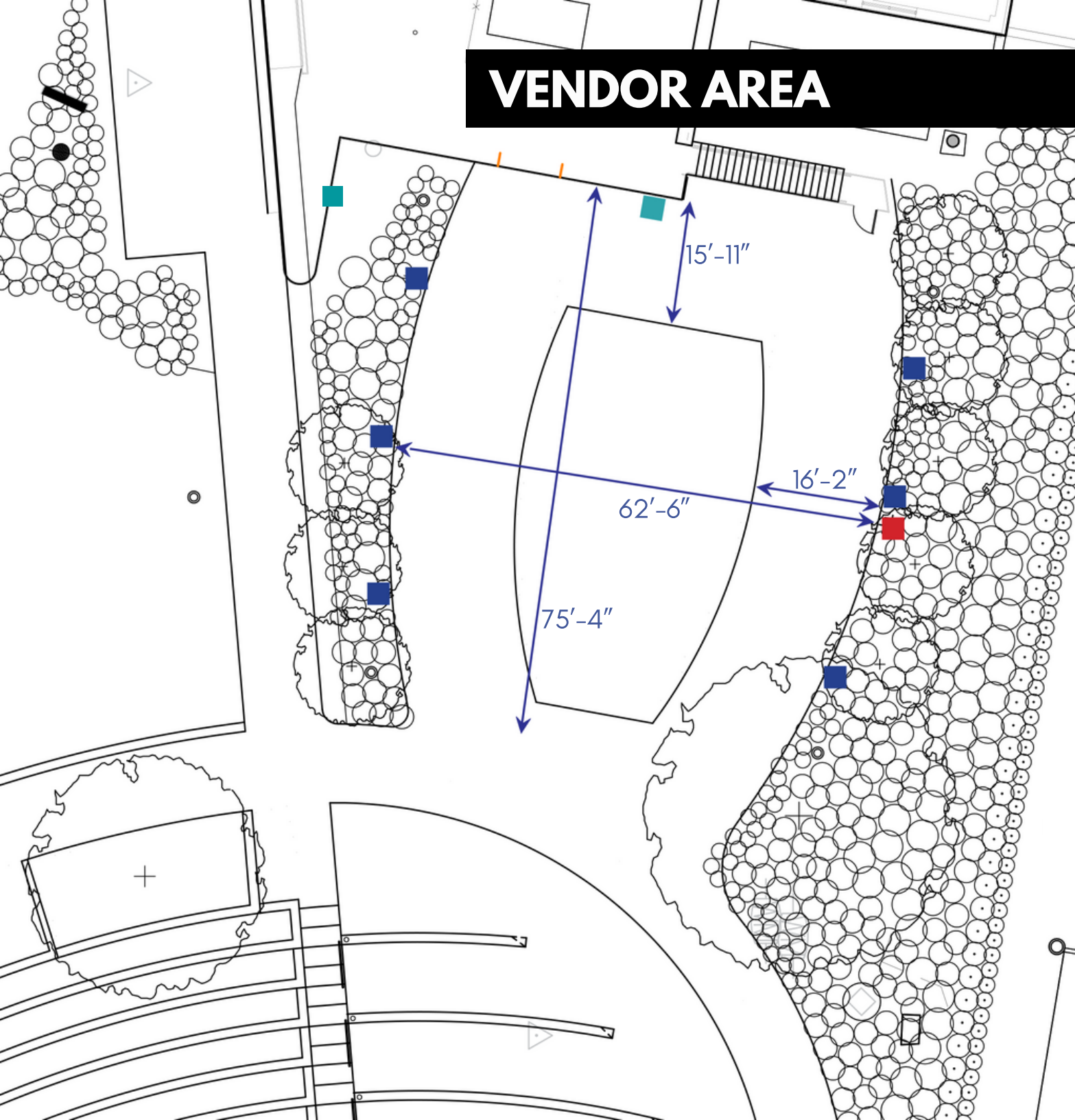
# SEATING CHART



- Orchestra (200)
- Terraces A-E (1783)
- Lawn (1800)
- VIP (125)



# VENDOR AREA

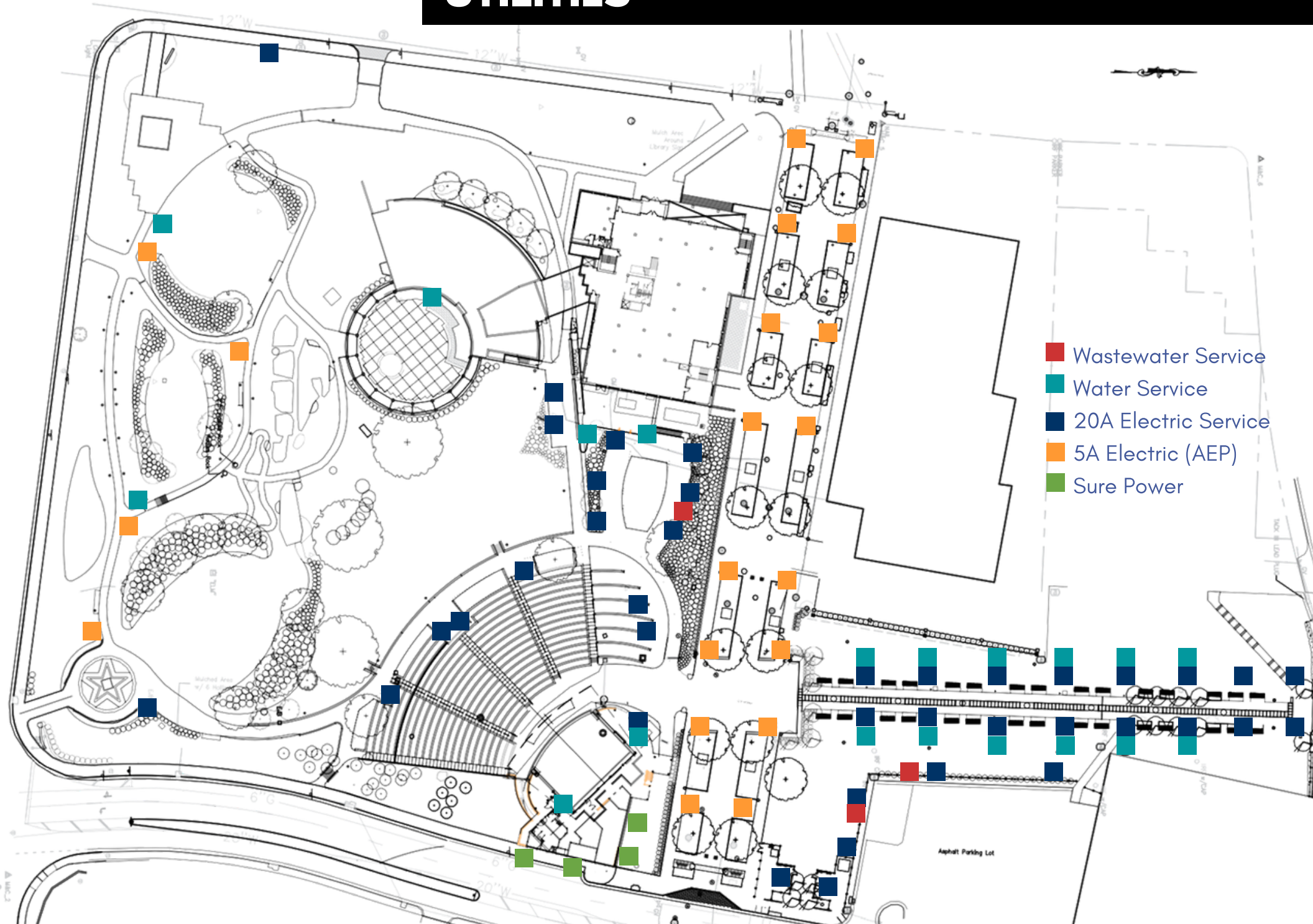


- Wastewater Service
- Water Service Only
- Electric Service Only

Vendor Bollards:  
2 - 20A duplex receptacles  
on individual circuits

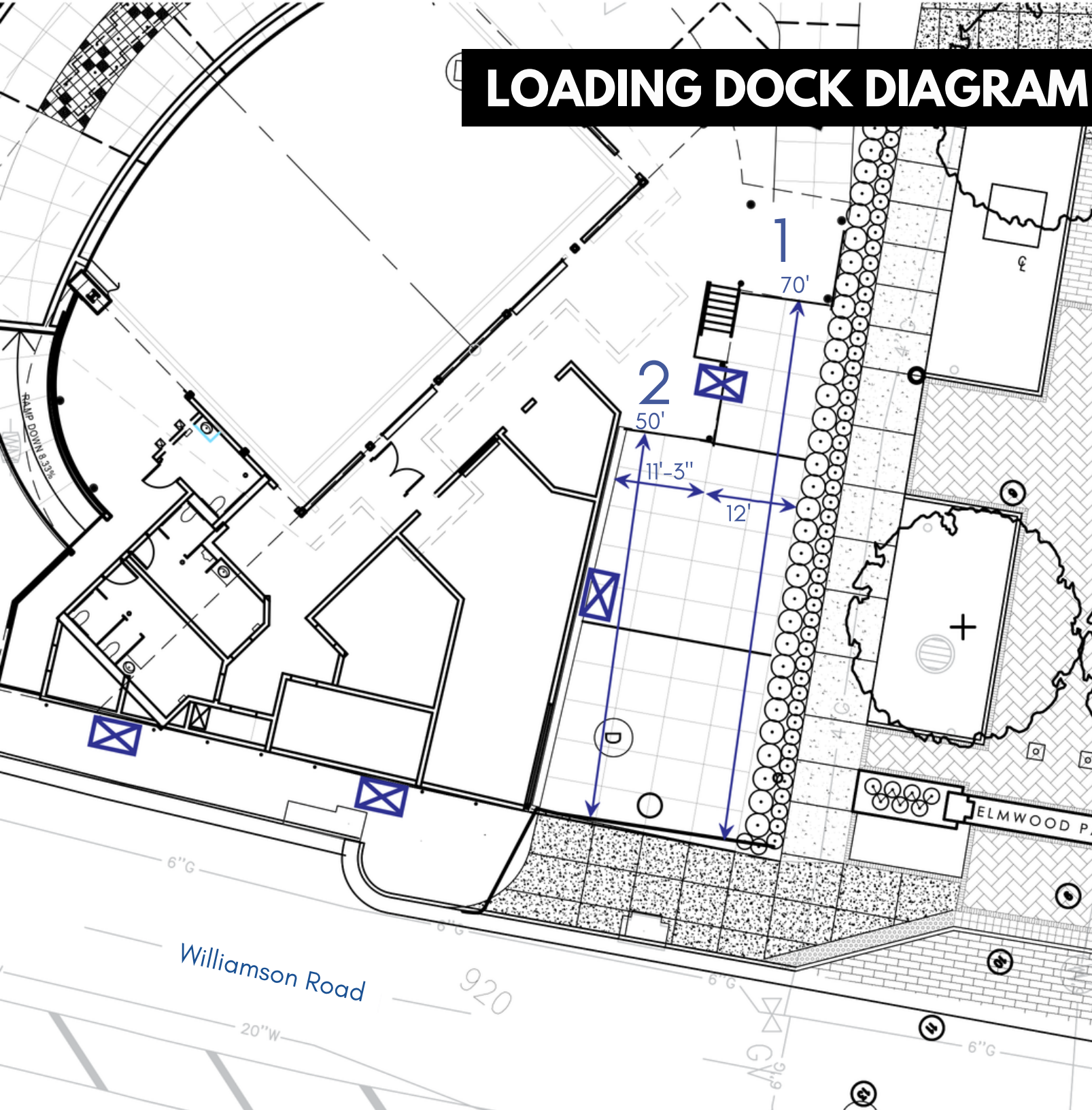


# UTILITIES






# LOADING DOCK DIAGRAM



Height of Dock #1: 3'-9"  
accommodates a standard  
tractor trailer

Height of Dock #2: 4'-1" -  
accommodates a 50'  
truck/vehicle

 Shoreline Power (4)  
220v/50A/NEMA  
14-50R receptacle



# STAGE DETAILS





## STAGE ELEVATIONS

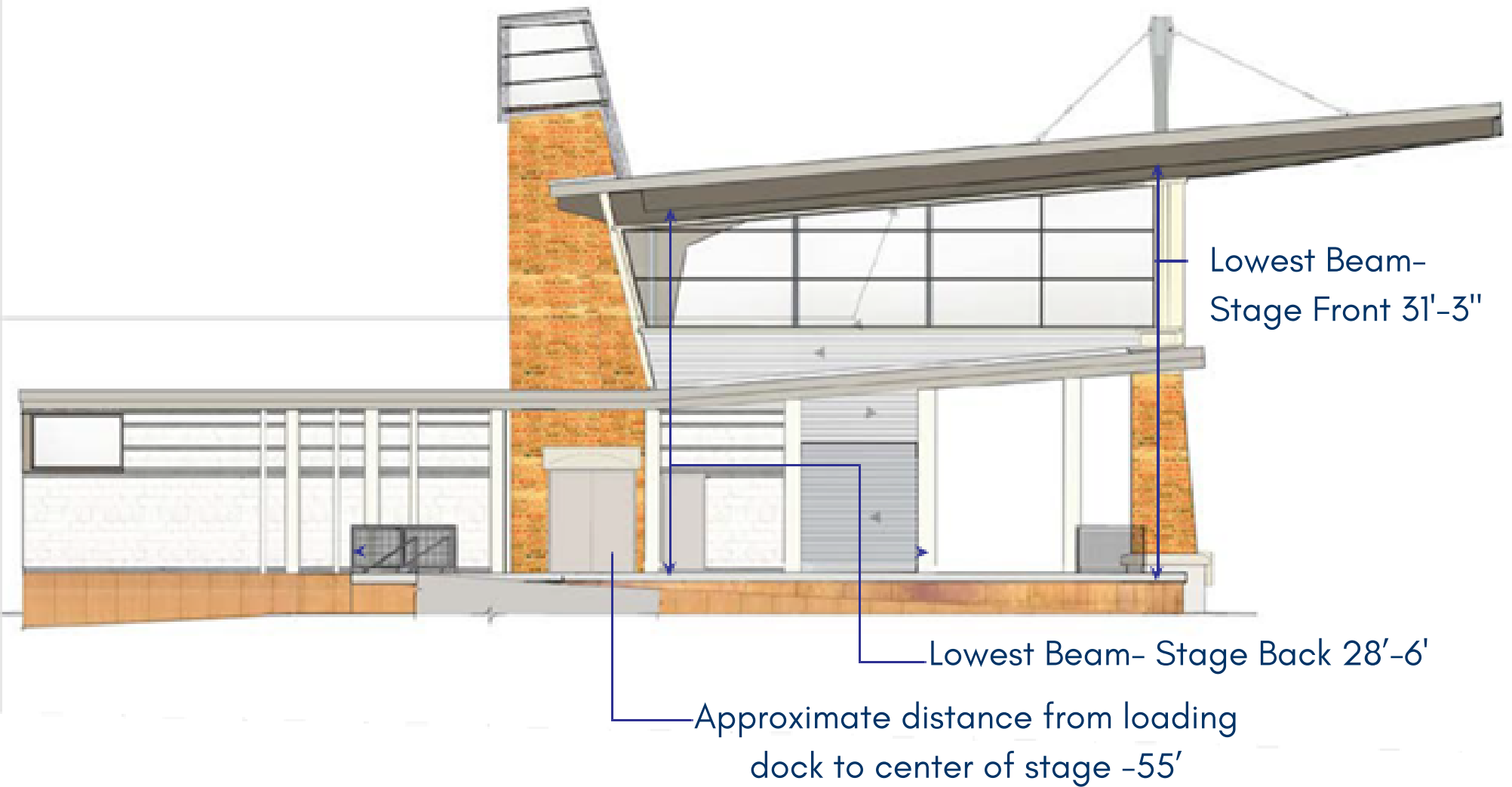


Stage Height- 3'

## Proscenium Width – 60'

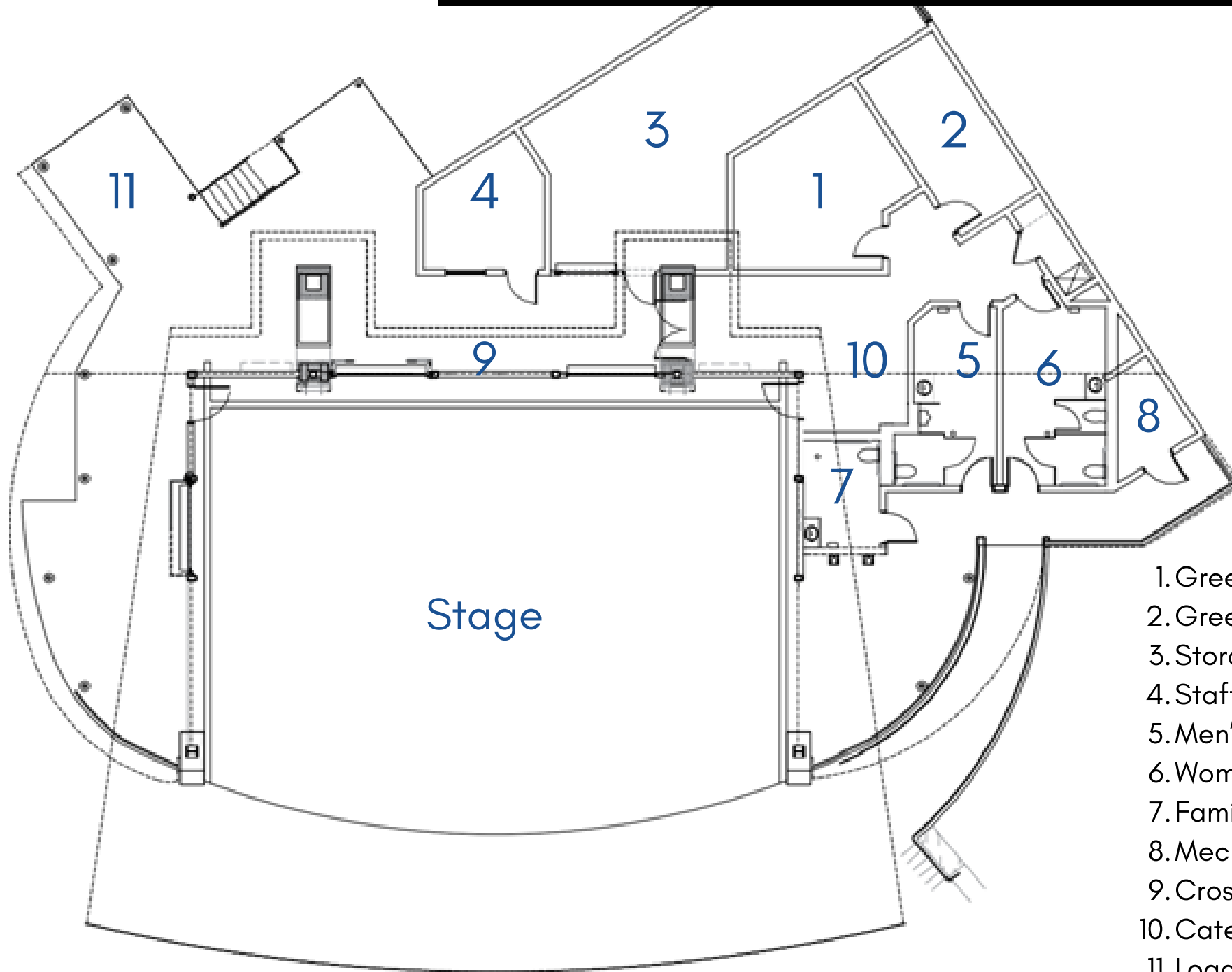


# STAGE ELEVATIONS





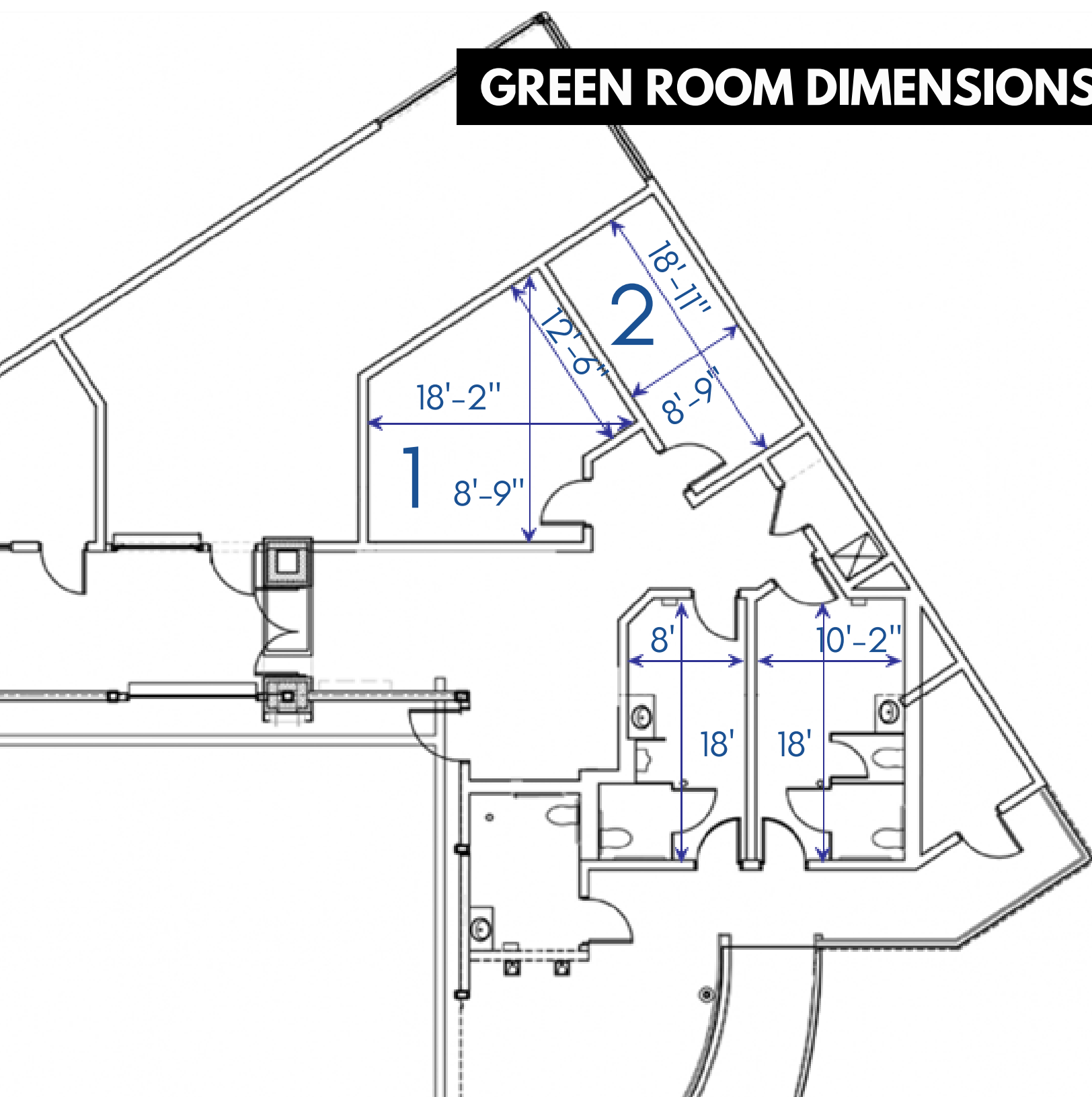
# STAGEHOUSE PLAN



- 1. Green Room
- 2. Green Room
- 3. Storage
- 4. Staff Office
- 5. Men's Restroom
- 6. Women's Restroom
- 7. Family Restroom
- 8. Mechanical
- 9. Cross Over
- 10. Catering Area
- 11. Loading Dock

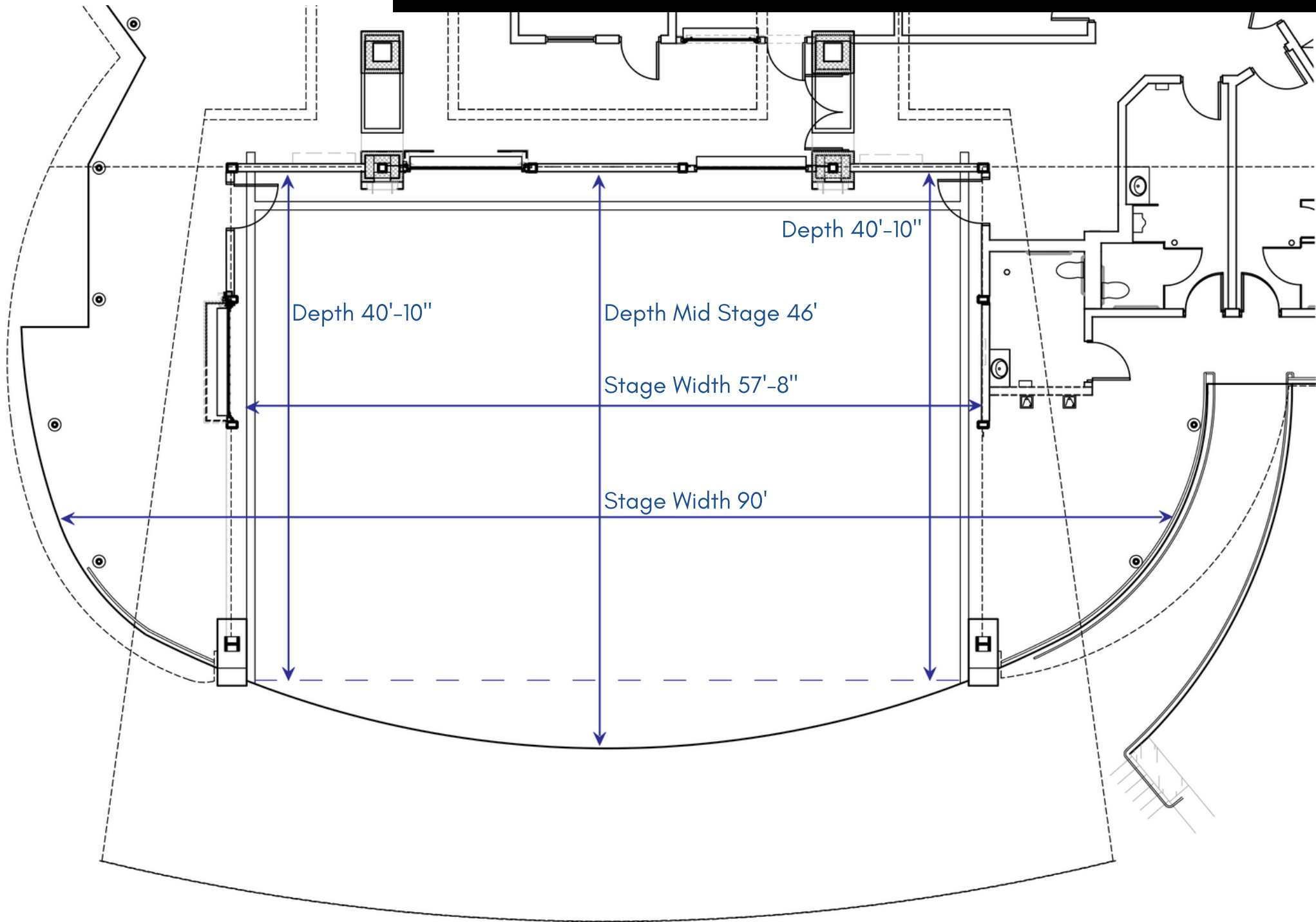


# GREEN ROOM DIMENSIONS

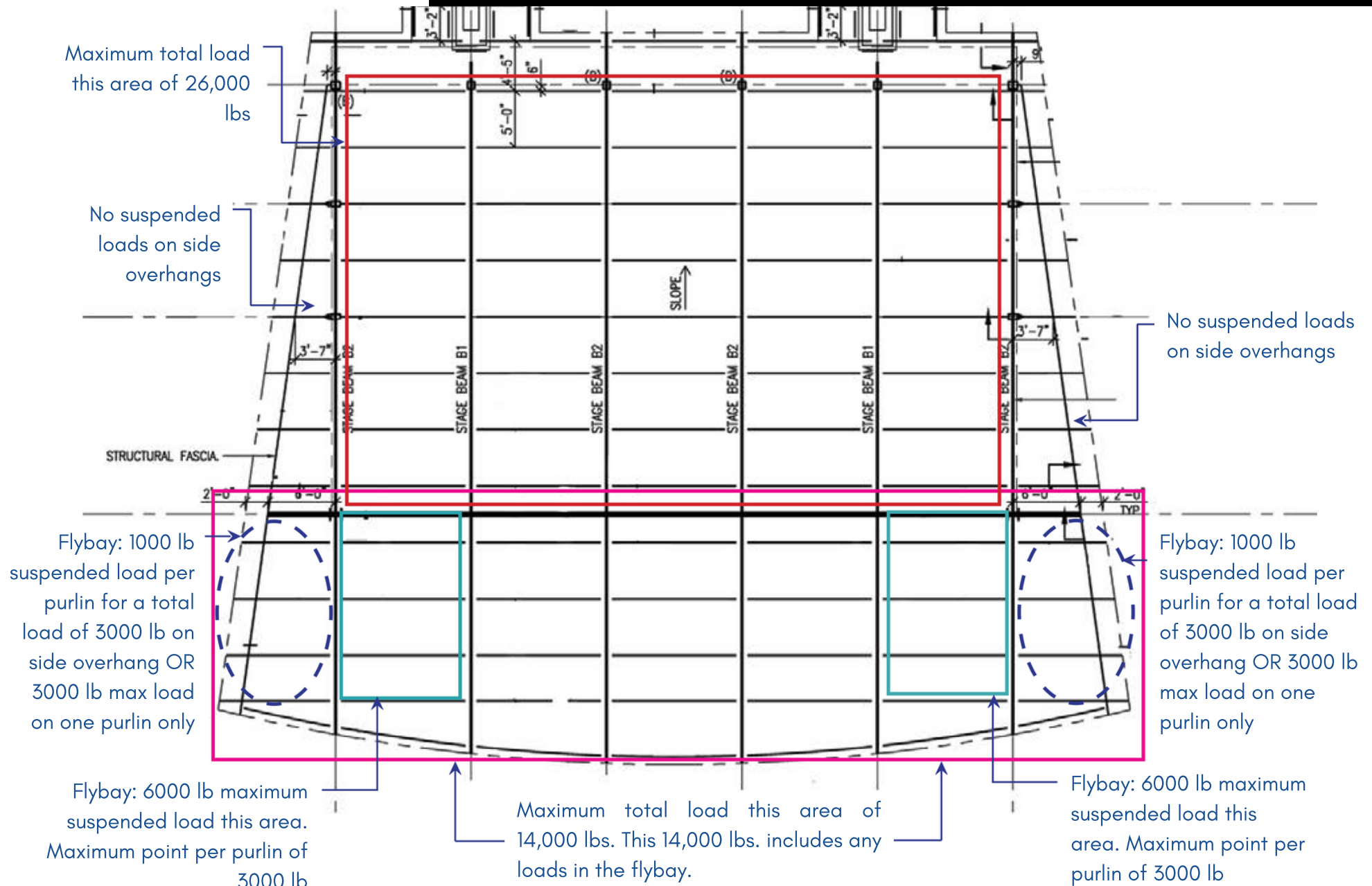




# STAGE DIMENSIONS



# RIGGING DIAGRAM



**Maximum suspended load per purlin shall not exceed 2000 lbs. unless noted otherwise.**

**Total load over an area shall not exceed the maximums listed on the plan.**



# STAGE POWER

---

## COMPANY SWITCH-BACK STAGE RIGHT, 200 AMP

200 Amp, 120/208V, 3 phase, 4 wire  
(4- #3/0 AWG with #6 AWG ground feeder from source)  
200 A Class R Fuses  
200 Amp Union Cam-Lock Outlet with G, N, A, B, C

---

## COMPANY SWITCH-BACK STAGE RIGHT, 400 AMP

400 Amp, 120/208V, 3 phase, 4 wire  
(4- #600 KCMIL with #3 AWG ground feeder from source)  
400 A Class R Fuses  
400 Amp Union Cam-Lock Outlet with G, N, A, B, C

---

## COMPANY SWITCH - BACK STAGE LEFT, 200 AMP

200 Amp, 120/208V, 3 phase, 4 wire  
(4- #3/0 AWG with #6 AWG ground feeder from source)  
200 A Class R Fuses  
200 Amp Union Cam-Lock Outlet with G, N, A, B, C

---

## 120V STAGE RECEPTACLES

Stage right - 2 - 20A isolated ground duplex receptacles with GFCI  
Stage left - 3 - 20A isolated ground duplex receptacles with GFCI  
Rear of stage - 4 - 20A isolated ground duplex receptacles with GFCI  
Apron (thrust) right - 1 - 20A isolated ground receptacle with GFCI  
Apron (thrust) left - 1 - 20A isolated ground receptacle with GFCI

---

## 50 AMP 208V SINGLE PHASE OUTLET

Backstage left - 1 outlet with NEMA 14-50R receptacle  
Backstage right - 1 outlet with NEMA 14-50R receptacle



Roanoke Parks and Recreation

[playroanoke@roanokeva.gov](mailto:playroanoke@roanokeva.gov)

(540) 853-2236

