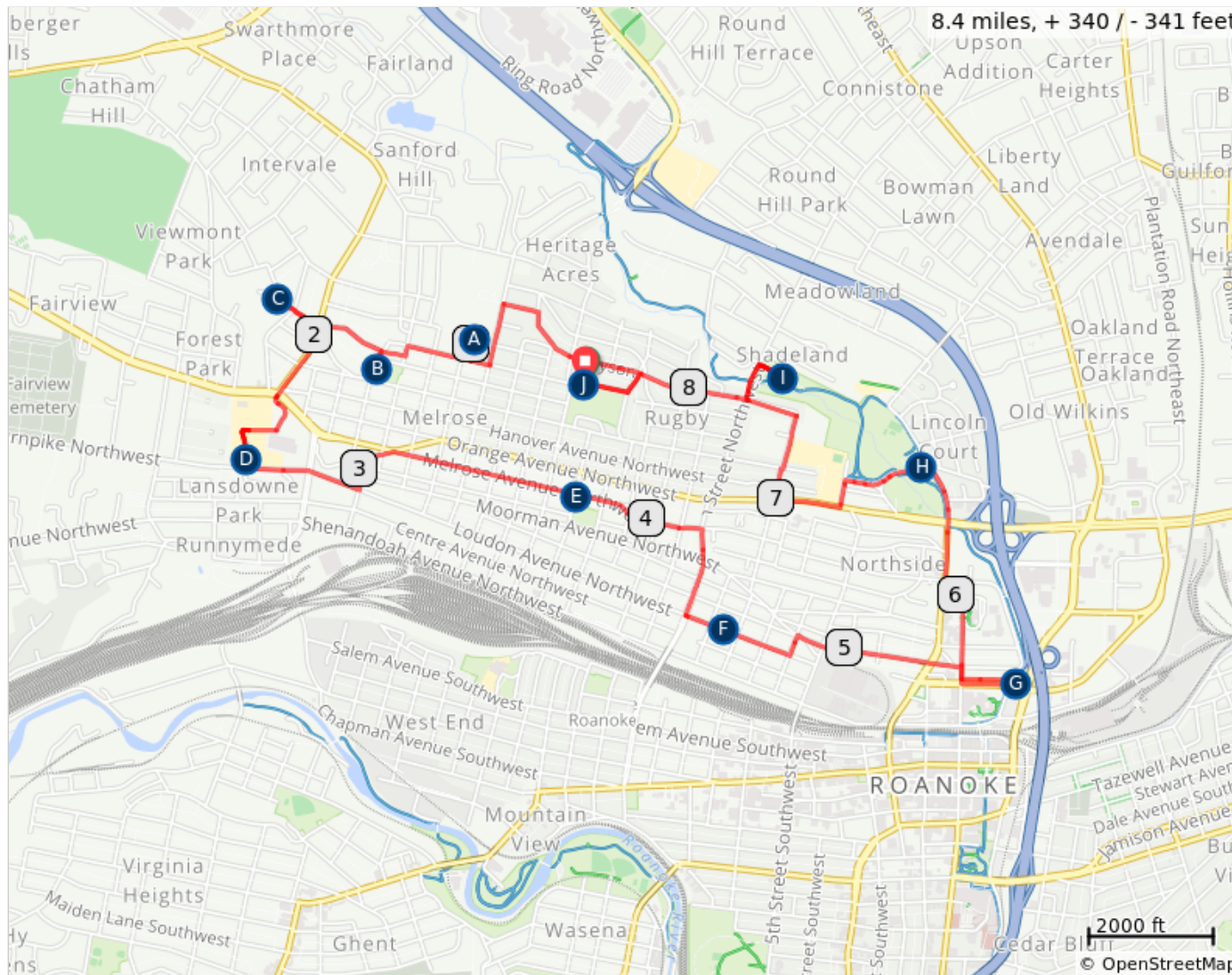
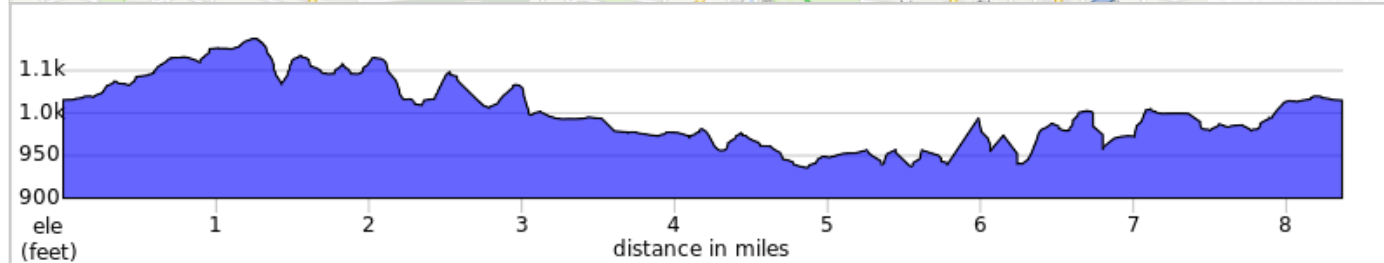


Roanoke City Parks Tour de Melrose-Rugby/Northwest



Connect the following parks on this fun route around Melrose-Rugby/Northwest Roanoke: Eureka Park and Recreation Center, Kennedy Park, Staunton Park, Villa Heights Parks, Horton Park, Melrose Park, Loudon Park, Entranceway Park, Washington Park, and Brown-Robertson Park

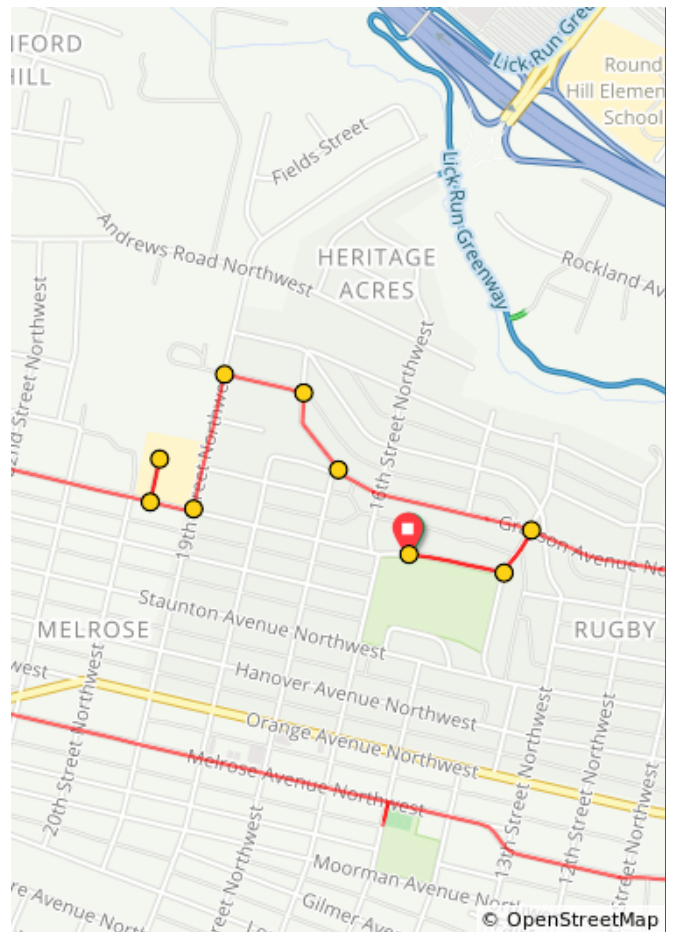
A.	Kennedy Park
B.	Staunton Park
C.	Villa Heights Park
D.	Horton Park
E.	Melrose Park
F.	Loudon Park
G.	Entranceway Park
H.	Washington Park
I.	Brown Robertson Park
J.	Eureka Park



Roanoke City Parks Tour de Melrose-Rugby/Northwest

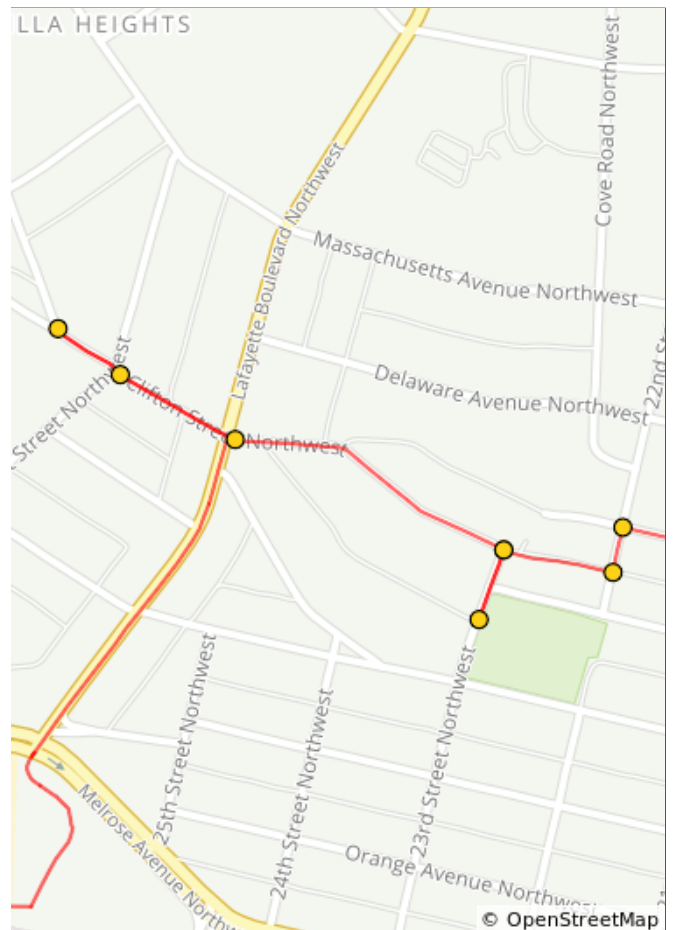
Dist	Type	Note
0.0	📍	Start of route
0.1	←	From the parking area, go back towards 14th NW and turn L.
0.2	←	L onto Grayson Ave NW
0.5	↑	Continue straight onto 17th St NW
0.6	←	L onto Grayson Ave NW. Note: There is no street sign.
0.7	←	L onto 19th St NW
0.9	→	R onto Carroll Ave NW
1.0	→	R into the Kennedy Park parking area.
1.0	→	Check out the park and then turn R out of the parking lot back onto Carroll Ave.

1.0 miles. +64/-6 feet



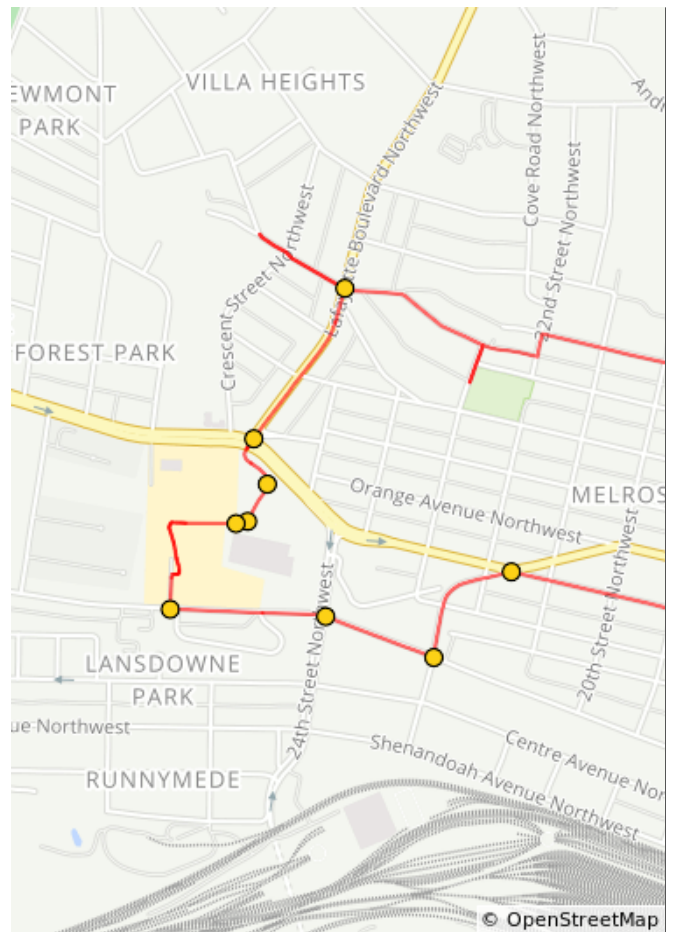
Dist	Type	Note
1.3	←	L onto 22nd St NW
1.3	→	R onto Mercer Ave
1.4	←	L onto 23rd St NW
1.4	↻	You will see Staunton Park on your L. After checking out the park, do a U-turn and come back the way you came on 23rd St.
1.5	←	L onto Clifton St NW
1.7	↑	Continue straight across Lafayette Blvd to stay on Clifton
1.8	↑	Continue straight across Crescent to stay on Clifton
1.8	↑	Continue straight into Villa Height Park. You will see basketball courts and a playground on your L. Turn around and come back the way you came.

0.8 miles. +38/-67 feet



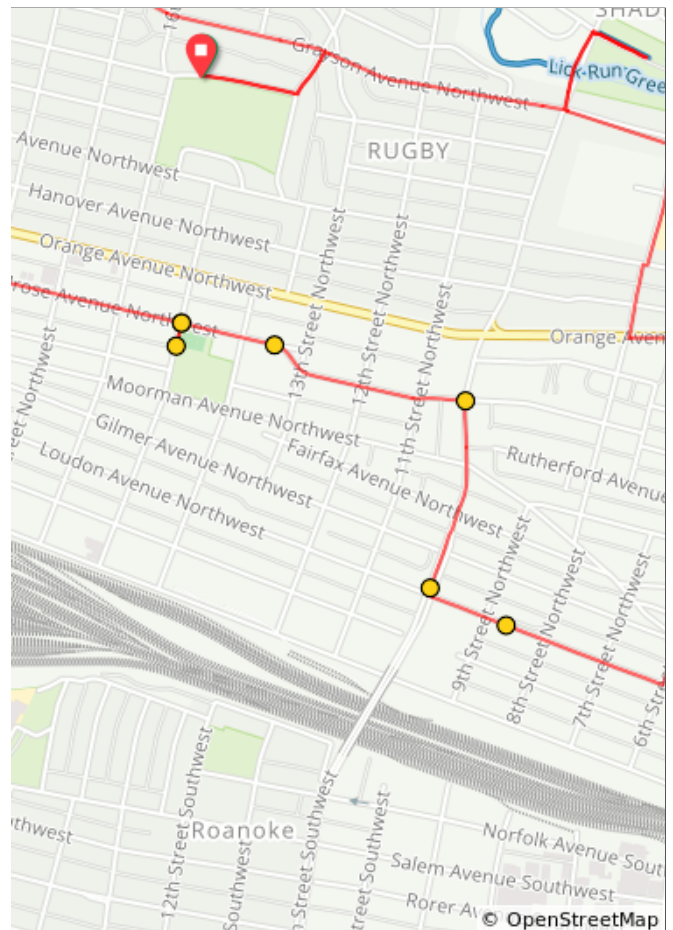
Dist	Type	Note
2.0	→	R onto Lafayette Blvd NW
2.2	↑	Go straight at light into Goodwill Parking lot towards Melrose Branch Library. Use caution as this is a busy intersection.
2.3	→	R to keep going towards library
2.3	↗	Slight R to go towards paved path towards park
2.4	↑	Continue straight on paved pathway to Horton Park.
2.6	←	L onto Salem Turnpike NW
2.8	↑	Continue straight onto Loudon Ave NW
2.9	←	L onto 22nd St NW
3.1	→	Slight R onto Melrose Ave NW

1.3 miles. +57/-113 feet



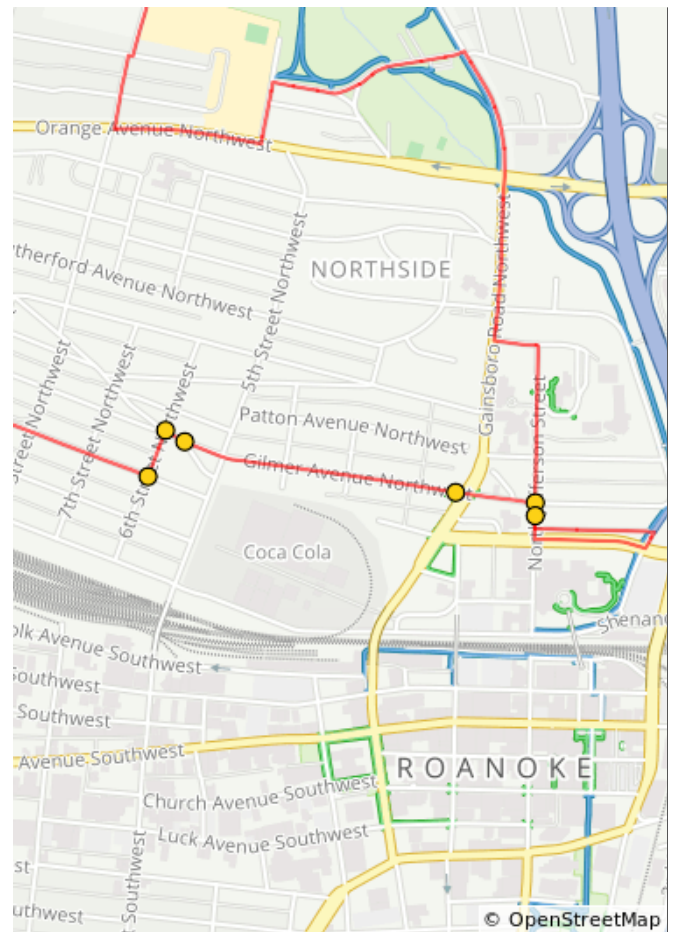
Dist	Type	Note
3.7	→	R onto 15th St NW. You will see Melrose Park on your L.
3.7	↻	Make a U-turn after enjoying the park to get back to Melrose Ave.
3.8	→	R onto Melrose Ave NW
3.9	→	Slight R to stay on Melrose Ave NW
4.2	→	R onto 10th St NW. Use caution.
4.4	←	L onto Loudon Ave.
4.5	i	Loudon Park is on your L. Enjoy!

1.4 miles. +29/-39 feet



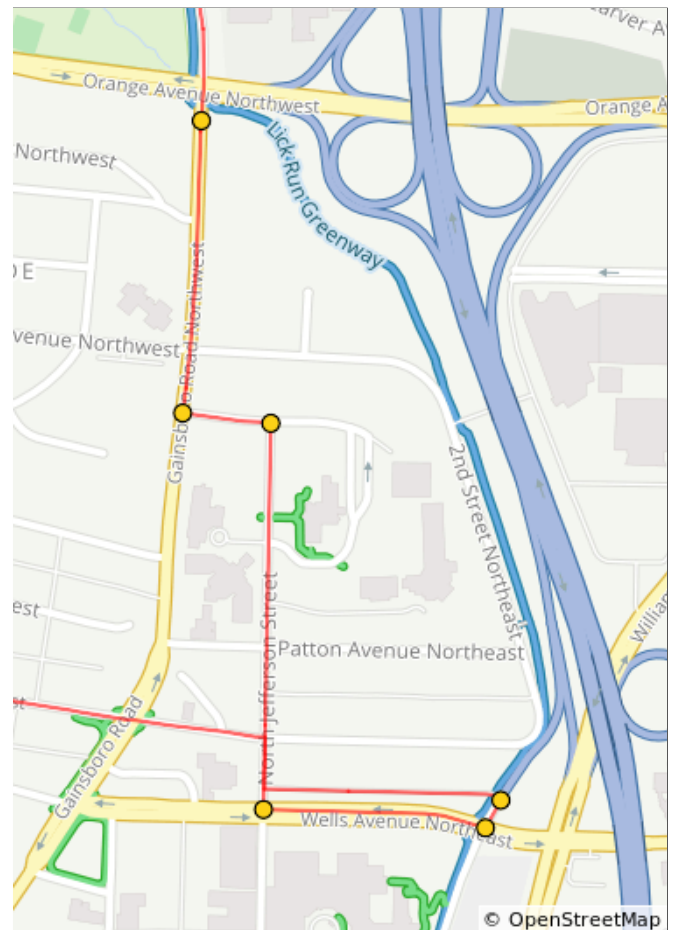
Dist	Type	Note
4.8	←	L onto 6th St NW
4.8	→	R onto Moorman Ave NW
4.9	↑	Continue onto Gilmer Ave NW
5.2	↑	Continue straight onto Gilmer Ave.
5.4	→	R onto N Jefferson St
5.4	←	L into paved alley before you get to Wells Ave.

0.8 miles. +18/-17 feet



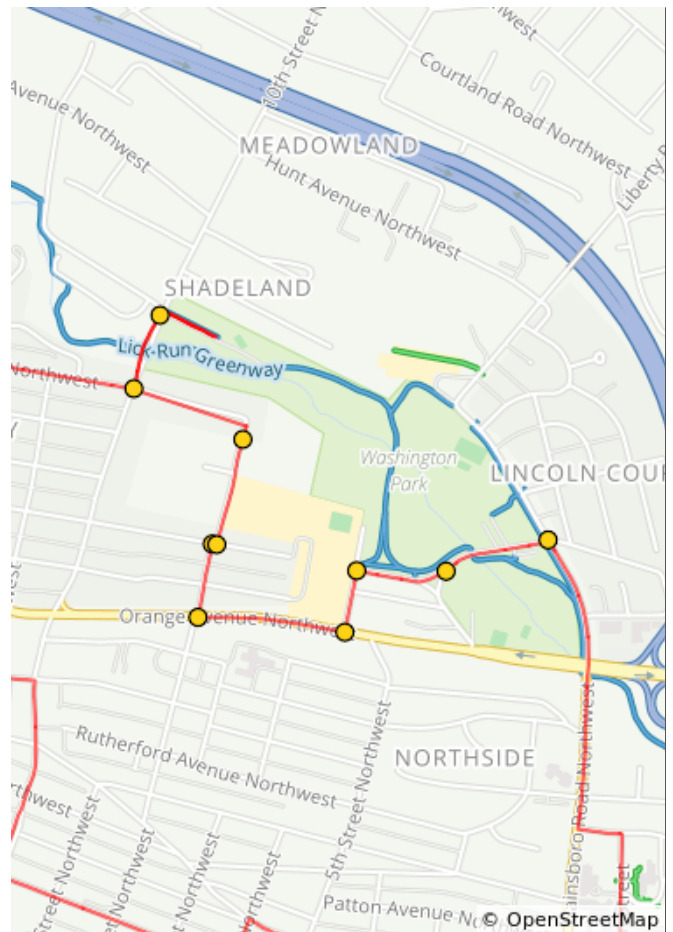
Dist	Type	Note
5.6	i	You will see Entranceway Park just ahead.
5.6	→	R onto Wells Avenue Northeast
5.7	→	R onto North Jefferson Street
6.0	←	L onto Celtic Way
6.0	→	R onto Gainsboro Road Northwest. Use caution as this is a busy road.
6.2	↑	Continue straight to stay onto Burrell St.

0.9 miles. +35/-31 feet



Dist	Type	Note
6.5	←	L into Washington Park.
6.6	↑	Keep R at the fork.
6.7	←	L onto 5th Street Northwest. Steep downhill to Orange Ave, use caution.
6.8	→	R onto Orange Avenue Northwest, US 460, US 11. Use caution as this is a busy road.
7.0	→	R onto 8th St NW
7.1	→	R onto Staunton Ave NW
7.1	←	Take immediate L onto 8th St NW
7.3	←	Continue L onto Grayson Ave NW
7.4	→	R onto 10th St NW
7.5	→	R into Brown Robertson Park.

1.3 miles. +58/-63 feet



Dist	Type	Note
7.7	←	L back onto 10th St after leaving the park.
7.8	→	R onto Grayson Ave NW
8.2	←	L onto 14th St NW
8.2	→	R into the Eureka parking area.
8.4	📍	End of route

0.8 miles. +38/-8 feet

